



701 S Ridge Avenue, Troy, OH 45374
1-888-4HOBART • www.hobartcorp.com

AM-14/AM-14C DISHWASHERS

HOBART

STANDARD FEATURES

- 53 racks per hour – hot water sanitizing
- 16 gauge stainless steel tank, chamber, doors, frame and feet
- Stainless steel front panel (AM14)
- Microcomputer controls with LED cycle/temperature display
- Manual by-pass controls
- Field adjustable control box height
- Left hand or right hand controls (AM14)
- 90° controls (AM14C)
- Revolving upper and lower anti-clogging wash arms
- Revolving upper and lower anti-clogging rinse arms
- Scrap screen and bucket system
- Self-draining, high efficiency pump with Ni-resistant impeller
- Automatic fill
- Door actuated drain closure
- Spring counterbalanced doors with nylon door guides
- Vent fan control (gas units only)
- Pass-through or corner installation
- Hot water or chemical sanitation

VOLTAGE

- ☐ 208-240/60/1
- ☐ 208-240/60/3
- ☐ 480/60/3



MODELS

- ☐ AM-14
- ☐ AM-14C

OPTIONS AT EXTRA COST

- ☐ 70° rise electric booster heater
- ☐ Flanged feet

ACCESSORIES

- ☐ Vent fan control field installed kit (electric heat)
- ☐ 3/4" pressure regulator valve
- ☐ Peg rack
- ☐ Combination racks
- ☐ Stainless steel tray rack

Specifications, Details and Dimensions on Inside and Back.



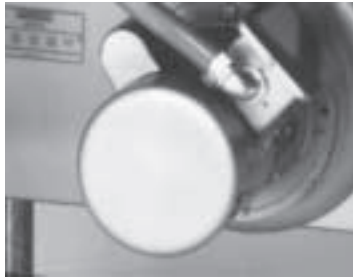
AM-14/AM-14C DISHWASHERS

AM-14/AM-14C DISHWASHERS



701 S Ridge Avenue, Troy, OH 45374
1-888-4HOBART • www.hobartcorp.com

STANDARD DESIGN FEATURES



PUMP: High efficiency self-draining pump assures maximum cleanliness and sanitation.



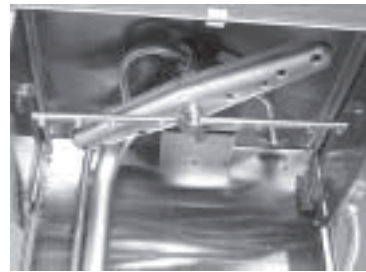
CONTROL BOX: Mounted on right or left side (AM14) or 90° (AM14C) of machine, below table level, to provide easy access to the microcomputer controls. Field adjustable in height from table $1\frac{1}{16}$ " to $10\frac{1}{16}$ ".



DOOR CYCLE SWITCH: Automatically starts the wash-rinse timer program when doors are closed. Door cycle switch turns off power to pump if doors are opened while machine is operating and resets timer program to start position.



AUTOMATIC TEMPERATURE CONTROL AND POSITIVE LOW-LEVEL WATER PROTECTION: The stainless steel probe contains a thermistor sensor for water temperature control and a reed switch works in conjunction with the float (below the probe) for positive low-level water protection.



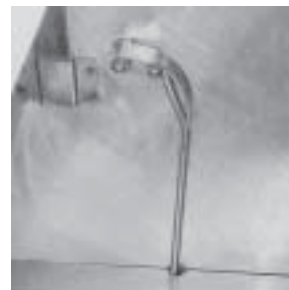
UPPER WASH & RINSE ASSEMBLY: Wash arm — all stainless steel (Hobart exclusive design) provides improved washability. Interchangeable with lower wash arm. Revolving upper rinse arm assures efficient, effective rinse coverage.



LOWER WASH AND RINSE ARMS: Wash arm — all stainless steel, interchangeable with upper wash arm. Lower revolving rinse arm assures effective rinse coverage.



REMOVABLE SCRAP BASKET: Stainless steel, self-flushing strainer pan and removable scrap basket for easy cleaning.



AUTOMATIC DRAIN SHUT-OFF: Door actuated, automatically closes drain when doors are lowered.



701 S Ridge Avenue, Troy, OH 45374
1-888-4HOBART • www.hobartcorp.com

AM-14/AM-14C DISHWASHERS

MICROCOMPUTER CONTROLS FOR RELIABILITY AND PERFORMANCE

The new microcomputer control provides LED digital display of cycle (Fill, Wash, Rinse) and temperature. Built-in, self diagnostics makes service fast and easy, if it should ever be needed.

The AM-14 is field convertible to either hot water or low temperature chemical sanitizing and features “flexible timing for special applications”. Capacity varies from 52 racks per hour to 80 racks per hour depending on operating mode. Unit has equal capacity to some two-rack fill and dump dishwashers, but requires only half the space and consumes less water.



STANDARD EQUIPMENT		OPTIONAL ACCESSORY GROUPS (at extra cost)
1 H.P. Magnetically Controlled Motor	208-240/60/1, 208-240/60/3 and 480/60/3 all with solid state motor protection	* 200-240/50/3, 380-415/50/3 all with solid state motor protection
Choice of Heat	Electric with automatic temperature control	Gas immersion tube style with energy-saving solid state ignition, temperature control and stainless steel flue
Control System	Microcomputer control system Door cycle switches Solid state water temperature sensor Positive low water protection Stainless steel water-protected control box and switching Magnetic power switch LED display on control box for monitoring wash and final rinse temperatures Manual override switches for wash and rinse	13KW, 70° rise electric hot water booster heater Left or right hand mounted control panel
Construction	16 gauge welded stainless steel tank, legs and frame unit 16 gauge welded stainless steel upper chamber Model AM-14 - 3 door, straight thru with inspection door and stainless steel “snap-in” front enclosure panel Model AM-14C - 2 door for corner installations	
Racks		Peg compartment, Plate racks, glass and silverware racks

(*These electrical specs not submitted for UL Listing)

AM-14 ELECTRIC



701 S Ridge Avenue, Troy, OH 45374
1-888-4HOBART • www.hobartcorp.com

WARNING

ELECTRICAL AND GROUNDING CONNECTIONS
MUST COMPLY WITH THE APPLICABLE
PORTIONS OF THE NATIONAL ELECTRICAL
CODE AND/OR OTHER LOCAL ELECTRICAL CODES.

PLUMBING CONNECTIONS MUST COMPLY
WITH APPLICABLE SANITARY, SAFETY,
AND PLUMBING CODES.

LEGEND CONNECTION INFORMATION (*AFF - ABOVE FINISHED FLOOR)

- E1 ELECTRICAL CONNECTION: MOTORS & CONTROLS (INCLUDING ELECTRIC HEAT).
1" OR 3/4" CONDUIT HOLE, 18-7/8" AFF.
- E2 ELECTRICAL CONNECTION: VENT FAN CONTROL.
1/2" CONDUIT HOLE, 26" AFF.
- E4 ELECTRICAL CONNECTION: RINSE AGENT & SANITIZER FEEDERS.
1/2" CONDUIT HOLE, 22" AFF.
- E5 ELECTRICAL CONNECTION: ELECTRIC BOOSTER.
1" CONDUIT HOLE, 16" AFF.
- P1 COMMON WATER CONNECTION: (W/O ELECTRIC BOOSTER)
(180°F WATER MIN. HOT WATER SANITIZING)
(120°F WATER MIN. CHEMICAL SANITIZING-NORMAL DUTY)
(130°F WATER MIN. CHEMICAL SANITIZING-LIGHT DUTY)
3/4" FPT, 55" AFF.
- P2 COMMON WATER CONNECTION: (W/ELECTRIC BOOSTER)
(110°F WATER MIN. HOT WATER SANITIZING);
3/4" MPT, 7-1/2" AFF.
- P3 DRAIN: 2" FPT, 6-1/4" AFF PLUG (1) SIDE BY HOBART.
- P4 DETERGENT PROBE SENSOR: (W/O BOOSTER) REMOVE CAP AND
STUD ASSEMBLY TO ACCESS 7/8" HOLE, 13-1/4" AFF
- P5 DETERGENT PROBE SENSOR: (W/BOOSTER) REMOVE
CAP AND STUD ASSEMBLY TO ACCESS 7/8" HOLE, 13-1/4" AFF
- P6 DETERGENT FEEDER: REMOVE CAP PLUG TO ACCESS
7/8" HOLE, 27-7/16" AFF.
- P7 RINSE AGENT FEEDER: 1/8" NPT. REMOVE 1/8" NPT
PIPE PLUG TO ACCESS TAPPED HOLE; 58-7/16" AFF.
- P8 SANITIZER FEEDER: (NORMAL/LIGHT DUTY) 1/8" NPT. REMOVE 1/8" NPT
PIPE PLUG TO ACCESS TAPPED HOLE; 58-7/16" AFF.

PLUMBING NOTES:

WATER HAMMER ARRESTOR (MEETING ASSE-1010 STANDARD
OR EQUIVALENT) TO BE SUPPLIED (BY OTHERS) IN
COMMON WATER SUPPLY LINE AT SERVICE CONNECTION.

RECOMMENDED WATER HARDNESS TO BE 2-6 GRAINS FOR BEST RESULTS.
RECOMMENDED BUILDING FLOWING WATER PRESSURE TO THE DISHWASHER
IS 20-25 PSI. IF PRESSURES HIGHER THAN 25 PSI ARE PRESENT, A
PRESSURE REGULATING VALVE WITH INTERNAL THERMAL EXPANSION BY
PASS, MUST BE SUPPLIED (BY OTHERS) IN THE WATER LINE TO THE
DISHWASHER.

FOR CONVENIENCE WHEN CLEANING, WATER TAP SHOULD BE
INSTALLED NEAR MACHINE WITH HEAVY DUTY HOSE AND
SQUEEZE VALVE.

MISCELLANEOUS NOTES:

ALL DIMENSIONS TAKEN FROM FLOOR LINE MAY INCREASE 3/4"
OR DECREASE 1/2" DEPENDING ON LEG ADJUSTMENT.

NET WEIGHT OF MACHINE: 291 LBS. W/O BOOSTER
DOMESTIC SHIPPING WEIGHT: 387 LBS. W/O BOOSTER

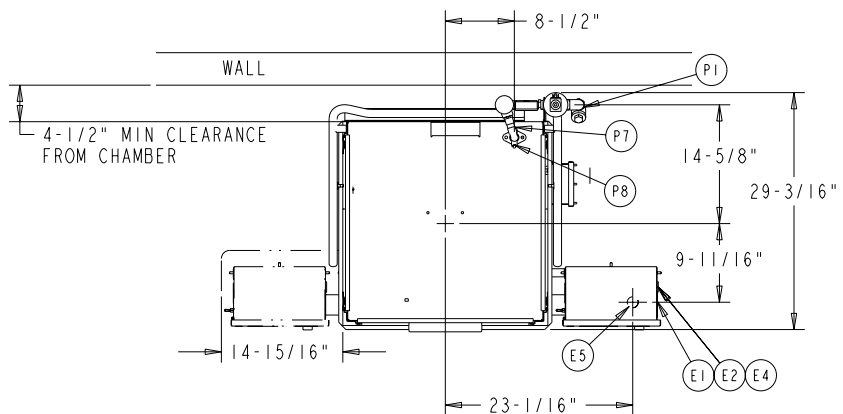
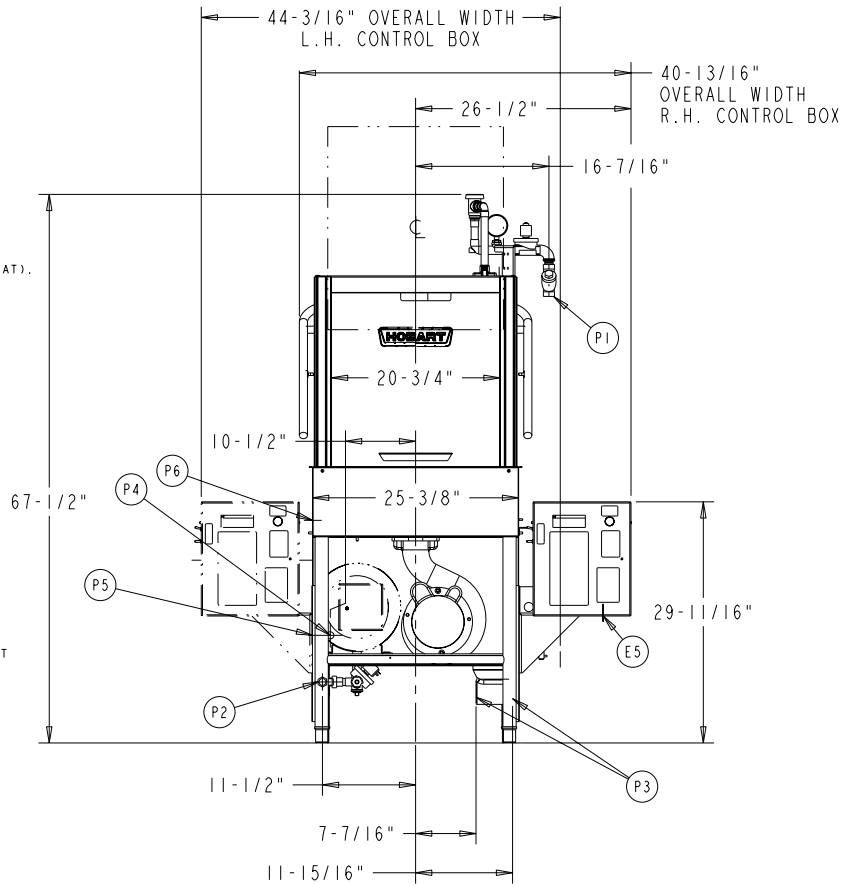
NET WEIGHT OF MACHINE: 353 LBS. W/BOOSTER
DOMESTIC SHIPPING WEIGHT: 455 LBS. W/BOOSTER

SIZE OF RACKS - 19-3/4" X 19-3/4"

DRAIN LEVER LOCATED INSIDE TANK.

VENT HOOD (IF REQUIRED) TO PROVIDE 100 CFM EXHAUST
1 H.P. MOTOR

• CONTROL BOX SHIPPED: 4-11/16" BELOW DISH TABLE
ADJUSTMENT: 11/16" TO 10-11/16" BELOW DISH TABLE



AM-14 WITH ELECTRIC HEAT			
ELEC. SPECS.	RATED AMPS	MINIMUM SUPPLY CIRCUIT CONDUCTOR AMPACITY	MAXIMUM OVERCURRENT PROTECTIVE DEVICE
208-240/60/1	39.9	50	50
208-240/60/3	23.9	30	30
480/60/3	12	15	15

MACHINE ELECTRICAL SPECIFICATIONS

208-240/60/1
208-240/60/3
480/60/3

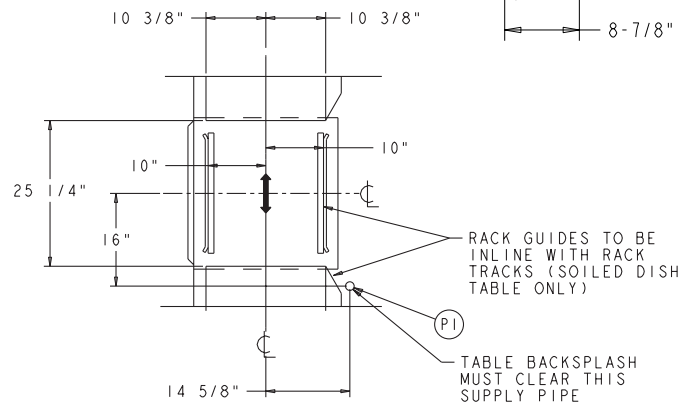
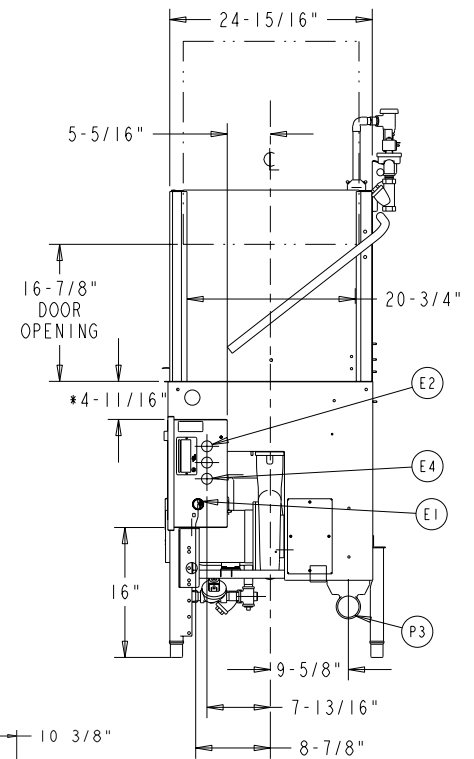
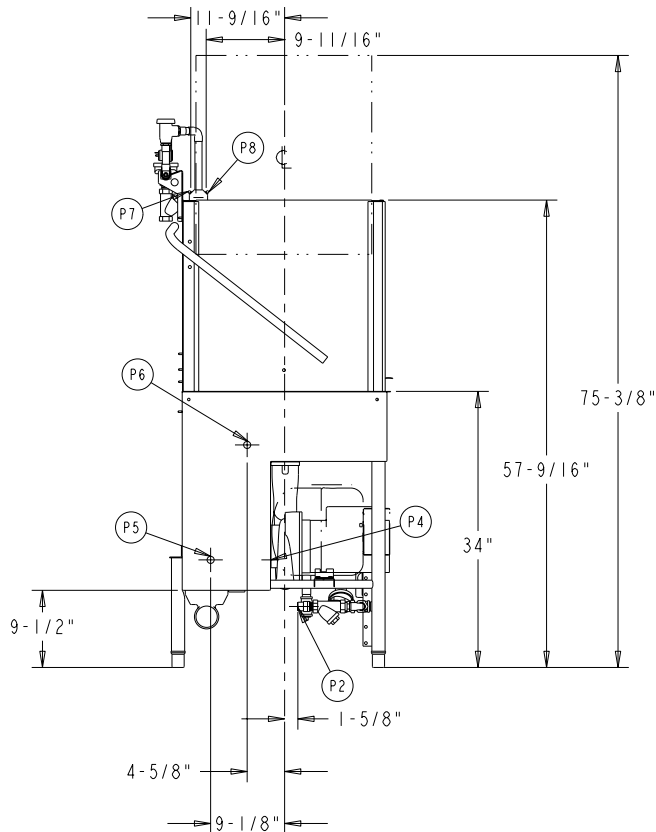
- 200-240/50/3
- 380-415/50/3
- THESE ELECTRICAL SPECIFICATIONS ARE NOT SUBMITTED FOR UL LISTING

BOOSTER AMPACITY RATINGS 13KW			
ELEC. SPECS.	RATED AMPS.	MINIMUM SUPPLY CIRCUIT CONDUCTOR AMPACITY	MAXIMUM OVERCURRENT PROTECTIVE DEVICE
208/60/1	62.5	80	80
240/60/1	54.2	80	80
208/60/3	36.1	50	50
240/60/3	31.3	50	50
480/60/3	15.6	25	25

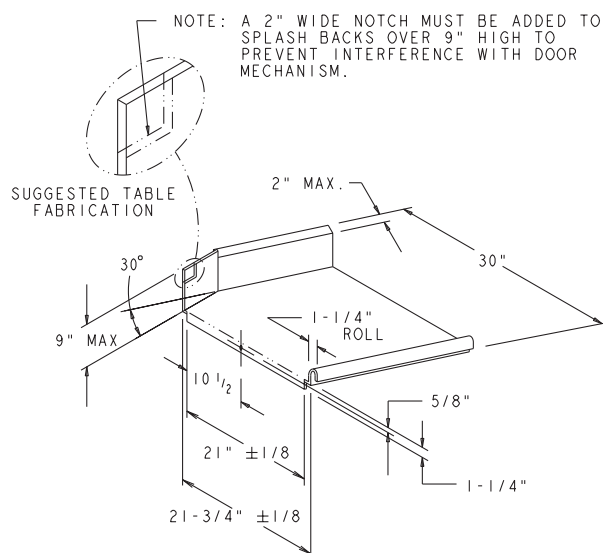
BOOSTER ELECTRICAL SPECIFICATIONS

208/60/1
240/60/1
208/60/3
240/60/3
480/60/3
• 200/50/3
• 380-415/50/3
• THESE ELECTRICAL SPECIFICATIONS ARE NOT SUBMITTED FOR UL LISTING

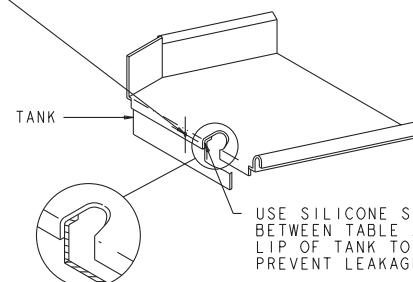
MODEL:
AM-14 W/ELECTRIC HEAT
00-892013
REV. C



TRACK & TABLE LAYOUT



- 5/16-18 SST TRUSS HD SCREW
- 5/16-18 SST LOCKWASHER
- 5/16-18 SST HEX HD NUT



AM-14 GAS



701 S Ridge Avenue, Troy, OH 45374
1-888-4HOBART • www.hobartcorp.com

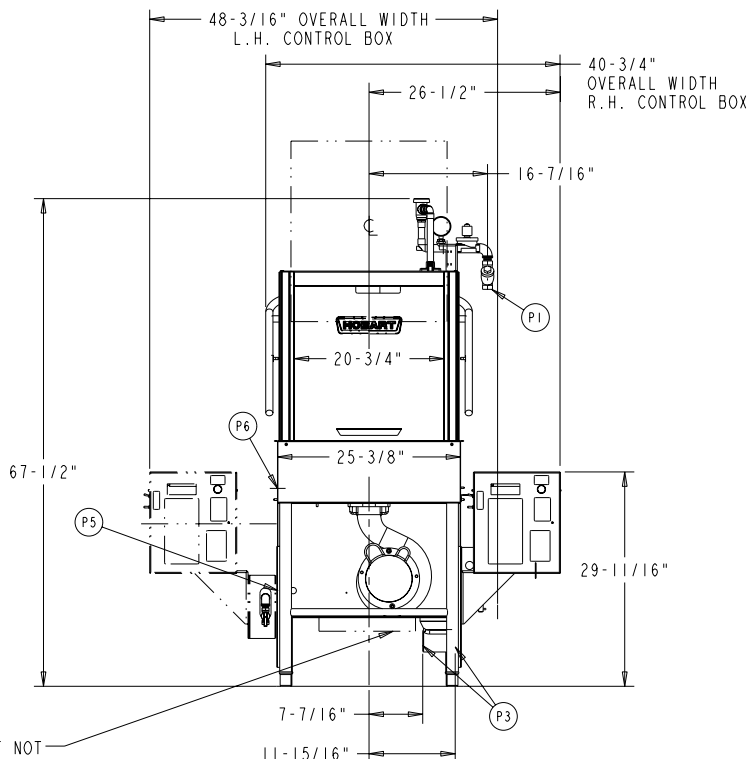
WARNING

ELECTRICAL AND GROUNDING CONNECTIONS
MUST COMPLY WITH THE APPLICABLE
PORTIONS OF THE NATIONAL ELECTRICAL
CODE AND/OR OTHER LOCAL ELECTRICAL CODES.

PLUMBING CONNECTIONS MUST COMPLY
WITH APPLICABLE SANITARY, SAFETY,
AND PLUMBING CODES.

LEGEND CONNECTION INFORMATION (*AFF - ABOVE FINISHED FLOOR)

- E1 ELECTRICAL CONNECTION: MOTORS & CONTROLS.
1" OR 3/4" CONDUIT HOLE, 18-7/8" AFF.
- E2 ELECTRICAL CONNECTION: VENT FAN CONTROL.
1/2" CONDUIT HOLE, 26" AFF.
- E3 ELECTRICAL CONNECTION: GAS BOOSTER.
1/2" CONDUIT HOLE, 24" AFF.
- E4 ELECTRICAL CONNECTION: RINSE AGENT & SANITIZER FEEDERS.
1/2" CONDUIT HOLE, 22" AFF.
- P1 COMMON WATER CONNECTION:
(180°F WATER MIN. HOT WATER SANITIZING)
(120°F WATER MIN. CHEMICAL SANITIZING-NORMAL DUTY)
(130°F WATER MIN. CHEMICAL SANITIZING-LIGHT DUTY)
3/4" FPT, 55" AFF.
- P3 DRAIN: 2" FPT, 6-1/4" AFF PLUG L.H. SIDE BY HOBART. (R.H. DRAIN ONLY)
- P5 DETERGENT PROBE SENSOR: REMOVE CAP AND STUD ASSEMBLY
TO ACCESS 7/8" HOLE, 13-1/4" AFF.
- P6 DETERGENT FEEDER: REMOVE CAP PLUG TO ACCESS
7/8" HOLE, 27-7/16" AFF.
- P7 RINSE AGENT FEEDER: 1/8" NPT, REMOVE 1/8" NPT
PIPE PLUG TO ACCESS TAPPED HOLE; 58-7/16" AFF.
- P8 SANITIZER FEEDER: (NORMAL/LIGHT DUTY) 1/8" NPT, REMOVE 1/8" NPT
PIPE PLUG TO ACCESS TAPPED HOLE; 58-7/16" AFF.
- P9 GAS CONNECTION - NAT. OR L.P. (WHEN ORDERED):
1/2" FPT, 8-1/2" AFF.



GAS HEATED DISHWASHERS

FOR NATURAL GAS, PRESSURE TO THE BURNER (CUSTOMER
CONNECTION) SHOULD NOT EXCEED 7" W.C.
FOR LIQUEFIED PETROLEUM GAS, PRESSURE TO THE BURNER
(CUSTOMER CONNECTION) SHOULD NOT EXCEED 11" W.C.
IF GAS PRESSURE IS HIGHER THAN 7" (NATURAL GAS) OR
11" (L.P.) W.C., A PRESSURE REGULATING VALVE MUST BE
INSTALLED (BY OTHERS) IN THE GAS LINE TO THE DISHWASHER.

GAS HEAT BTU INPUT - 20,000 NATURAL
20,000 PROPANE

PLUMBING MUST NOT
INTERFERE WITH GAS SCHROUD

PLUMBING NOTES:

WATER HAMMER ARRESTOR (MEETING ASSE-1010 STANDARD
OR EQUIVALENT) TO BE SUPPLIED (BY OTHERS) IN
COMMON WATER SUPPLY LINE AT SERVICE CONNECTION.

RECOMMENDED WATER HARDNESS TO BE 2-6 GRAINS FOR BEST RESULTS.

RECOMMENDED BUILDING FLOWING WATER PRESSURE TO THE DISHWASHER
IS 20-25 PSI. IF PRESSURES HIGHER THAN 25 PSI ARE PRESENT, A
PRESSURE REGULATING VALVE WITH INTERNAL THERMAL EXPANSION BY
PASS, MUST BE SUPPLIED (BY OTHERS) IN THE WATER LINE TO THE
DISHWASHER.

FOR CONVENIENCE WHEN CLEANING, WATER TAP SHOULD BE
INSTALLED NEAR MACHINE WITH HEAVY DUTY HOSE AND
SQUEEZE VALVE.

MISCELLANEOUS NOTES:

ALL DIMENSIONS TAKEN FROM FLOOR LINE MAY INCREASE 3/4"
OR DECREASE 1/2" DEPENDING ON LEG ADJUSTMENT.

NET WEIGHT OF MACHINE: 291 LBS. W/O BOOSTER

DOMESTIC SHIPPING WEIGHT: 381 LBS. W/O BOOSTER

NET WEIGHT OF MACHINE: 353 LBS. W/BOOSTER

DOMESTIC SHIPPING WEIGHT: 453 LBS. W/BOOSTER

SIZE OF RACKS - 19-3/4" X 19-3/4"

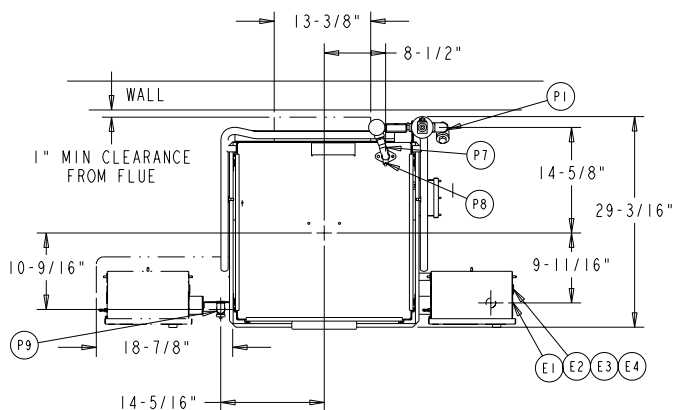
DRAIN LEVER LOCATED INSIDE TANK.

VENT HOOD (IF REQUIRED) TO PROVIDE 100 CFM EXHAUST

1 H.P. MOTOR

• CONTROL BOX SHIPPED: 4-11/16" BELOW DISH TABLE

ADJUSTMENT: 11/16" TO 10-11/16" BELOW DISH TABLE



AM-14 WITH GAS HEAT			
ELEC. SPECS.	RATED AMPS	MINIMUM SUPPLY CIRCUIT CONDUCTOR AMPACITY	MAXIMUM OVERCURRENT PROTECTIVE DEVICE
208-240/60/1	11.4	15	15
208-240/60/3	7.6	15	15
480/60/3	5.3	15	15

MACHINE ELECTRICAL SPECIFICATIONS

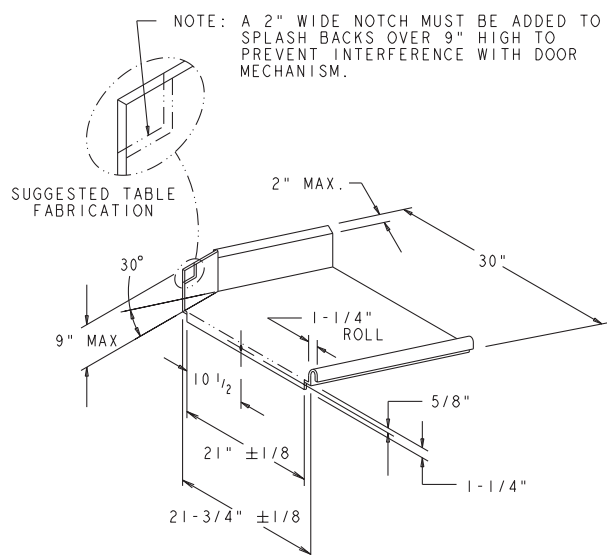
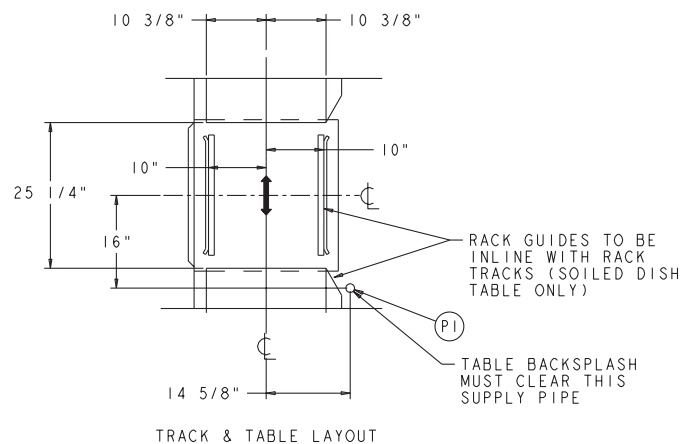
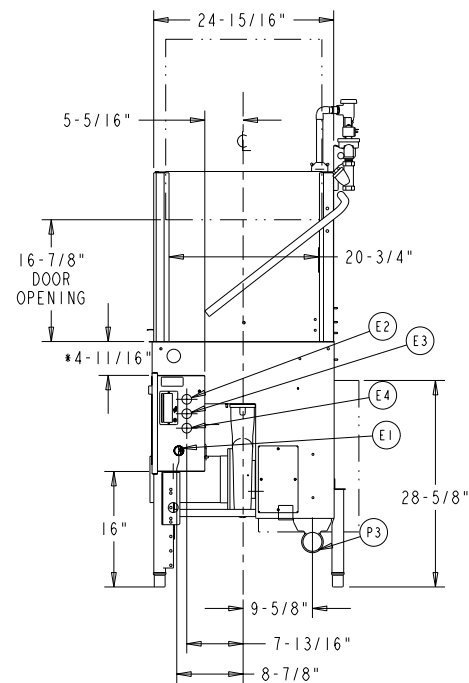
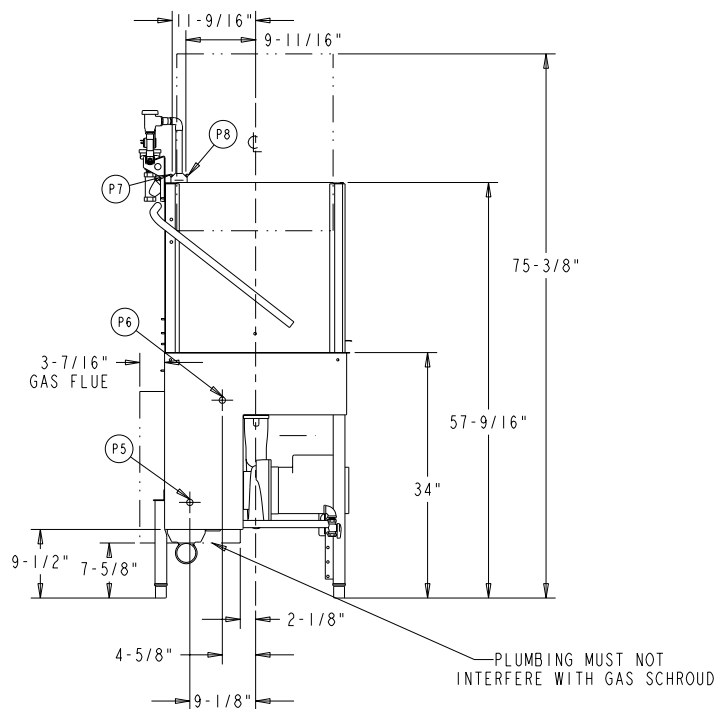
208-240/60/1
208-240/60/3
480/60/3

MODEL:

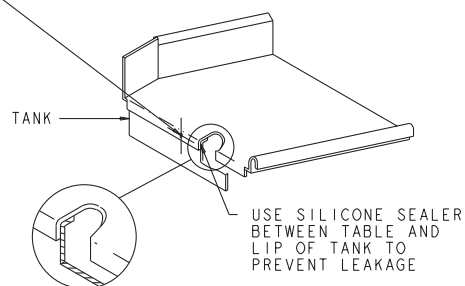
AM-14 W/GAS HEAT

00-892013

REV. C



- 5/16-18 SST TRUSS HD SCREW
- 5/16-18 SST LOCKWASHER
- 5/16-18 SST HEX HD NUT



AM-14C ELECTRIC

HOBART

701 S Ridge Avenue, Troy, OH 45374
1-888-4HOBART • www.hobartcorp.com

WARNING

ELECTRICAL AND GROUNDING CONNECTIONS
MUST COMPLY WITH THE APPLICABLE
PORTIONS OF THE NATIONAL ELECTRICAL
CODE AND/OR OTHER LOCAL ELECTRICAL CODES.

PLUMBING CONNECTIONS MUST COMPLY
WITH APPLICABLE SANITARY, SAFETY,
AND PLUMBING CODES.

LEGEND CONNECTION INFORMATION (*AFF - ABOVE FINISHED FLOOR)

- E1 ELECTRICAL CONNECTION: MOTORS & CONTROLS. (INCLUDING ELECTRIC HEAT), 1" OR 3/4" CONDUIT HOLE, 18-7/8" AFF.
- E2 ELECTRICAL CONNECTION: VENT FAN CONTROL, 1/2" CONDUIT HOLE, 26" AFF.
- E4 ELECTRICAL CONNECTION: RINSE AGENT & SANITIZER FEEDERS, 1/2" CONDUIT HOLE, 22" AFF.
- E5 ELECTRICAL CONNECTION: ELECTRIC BOOSTER, 1" CONDUIT HOLE, 16" AFF.
- P1 COMMON WATER CONNECTION: (W/O ELECTRIC BOOSTER) (180° F WATER MIN. HOT WATER SANITIZING) (120° F WATER MIN. CHEMICAL SANITIZING-NORMAL DUTY) (130° F WATER MIN. CHEMICAL SANITIZING-LIGHT DUTY) 3/4" FPT, 55" AFF.
- P2 COMMON WATER CONNECTION: (W/ELECTRIC BOOSTER) (110° F WATER MIN. HOT WATER SANITIZING); 3/4" MPT, 7-1/2" AFF.
- P3 DRAIN: 2" FPT, 6-1/4" AFF PLUG (I) SIDE BY HOBART.
- P4 DETERGENT PROBE SENSOR: (W/O BOOSTER) REMOVE CAP AND STUD ASSEMBLY TO ACCESS 7/8" HOLE, 13-1/4" AFF.
- P5 DETERGENT PROBE SENSOR: (W/BOOSTER) REMOVE CAP AND STUD ASSEMBLY TO ACCESS 7/8" HOLE, 13-1/4" AFF.
- P6 DETERGENT FEEDER: REMOVE CAP PLUG TO ACCESS 7/8" HOLE, 27-7/16" AFF.
- P7 RINSE AGENT FEEDER: 1/8" NPT, REMOVE 1/8" NPT PIPE PLUG TO ACCESS TAPPED HOLE; 58-7/16" AFF.
- P8 SANITIZER FEEDER: (NORMAL/LIGHT DUTY) 1/8" NPT, REMOVE 1/8" NPT PIPE PLUG TO ACCESS TAPPED HOLE; 58-7/16" AFF.

PLUMBING NOTES:

WATER HAMMER ARRESTOR (MEETING ASSE-1010 STANDARD OR EQUIVALENT) TO BE SUPPLIED (BY OTHERS) IN COMMON WATER SUPPLY LINE AT SERVICE CONNECTION.

RECOMMENDED WATER HARDNESS TO BE 2-6 GRAINS FOR BEST RESULTS.

RECOMMENDED BUILDING FLOWING WATER PRESSURE TO THE DISHWASHER IS 20-25 PSI. IF PRESSURES HIGHER THAN 25 PSI ARE PRESENT, A PRESSURE REGULATING VALVE WITH INTERNAL THERMAL EXPANSION BY PASS, MUST BE SUPPLIED (BY OTHERS) IN THE WATER LINE TO THE DISHWASHER.

FOR CONVENIENCE WHEN CLEANING, WATER TAP SHOULD BE INSTALLED NEAR MACHINE WITH HEAVY DUTY HOSE AND SQUEEZE VALVE.

MISCELLANEOUS NOTES:

ALL DIMENSIONS TAKEN FROM FLOOR LINE MAY INCREASE 3/4" OR DECREASE 1/2" DEPENDING ON LEG ADJUSTMENT.

NET WEIGHT OF MACHINE: 300 LBS. W/O BOOSTER

DOMESTIC SHIPPING WEIGHT: 402 LBS. W/O BOOSTER

NET WEIGHT OF MACHINE: 368 LBS. W/BOOSTER

DOMESTIC SHIPPING WEIGHT: 470 LBS. W/BOOSTER

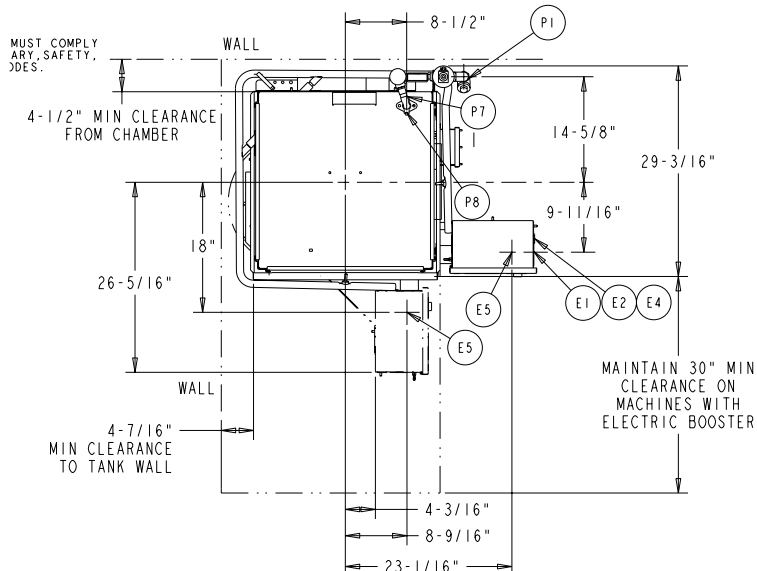
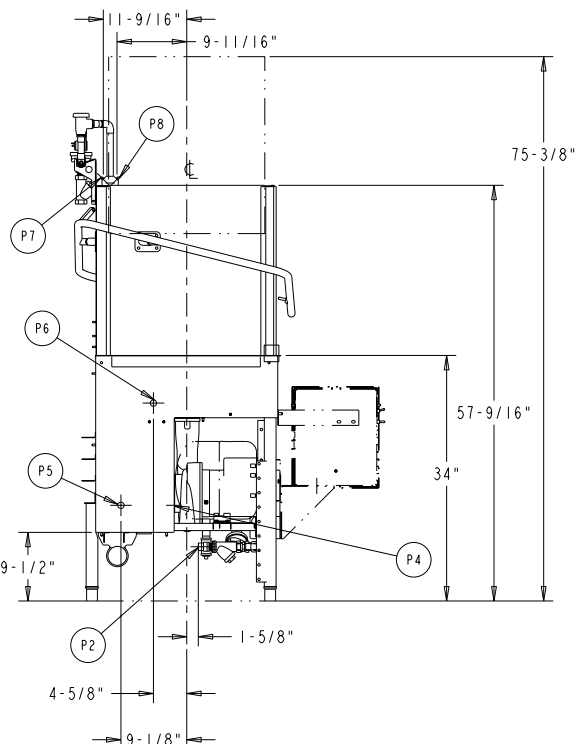
SIZE OF RACKS - 19-3/4" X 19-3/4"

DRAIN LEVER LOCATED INSIDE TANK.

VENT HOOD (IF REQUIRED) TO PROVIDE 100 CFM EXHAUST

1 H.P. MOTOR

• CONTROL BOX SHIPPED: 4-11/16" BELOW DISH TABLE
ADJUSTMENT: 11/16" TO 10-11/16" BELOW DISH TABLE



AM-14C WITH ELECTRIC HEAT			
ELEC. SPECS.	RATED AMPS	MINIMUM SUPPLY CIRCUIT CONDUCTOR AMPACITY	MAXIMUM OVERCURRENT PROTECTIVE DEVICE
208-240/60/1	39.9	50	50
208-240/60/3	23.9	30	30
480/60/3	12	15	15

MACHINE ELECTRICAL SPECIFICATIONS

208-240/60/1
208-240/60/3
480/60/3

- 200-240/50/3
- 380-415/50/3
- THESE ELECTRICAL SPECIFICATIONS ARE NOT SUBMITTED FOR UL LISTING

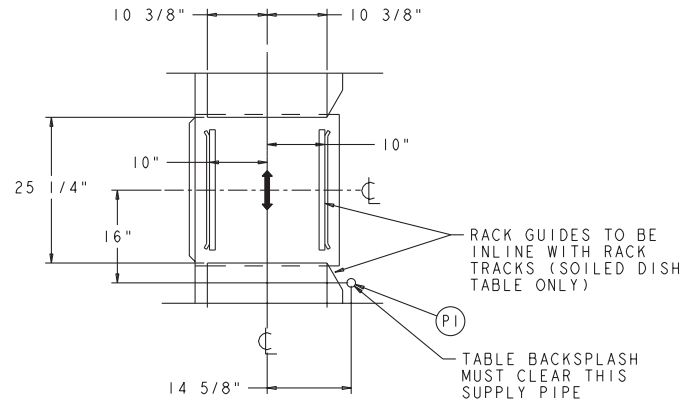
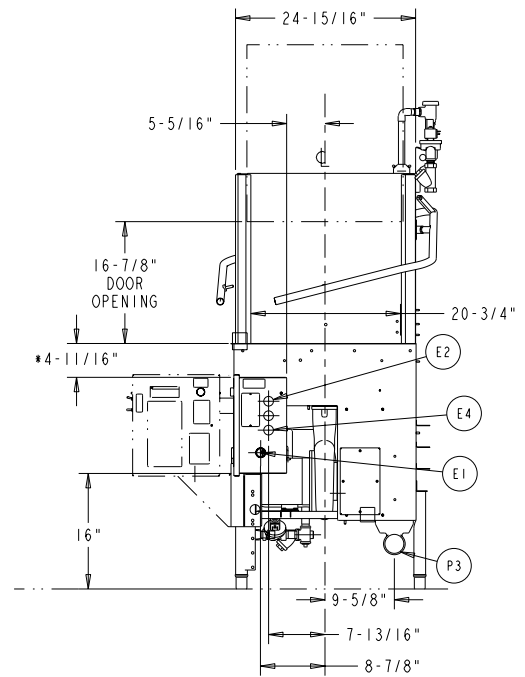
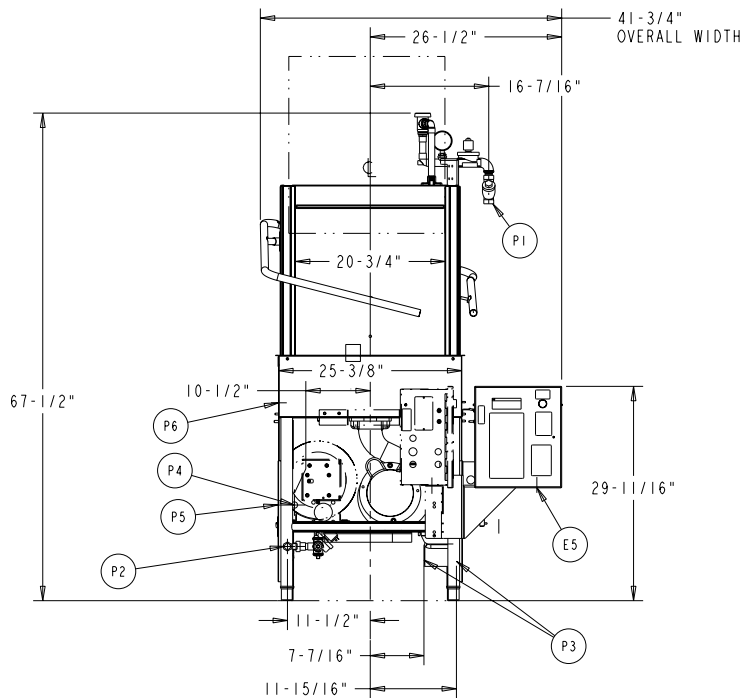
BOOSTER AMPACITY RATINGS 13KW			
ELEC. SPECS.	RATED AMPS.	MINIMUM SUPPLY CIRCUIT CONDUCTOR AMPACITY	MAXIMUM OVERCURRENT PROTECTIVE DEVICE
208/60/1	62.5	80	80
240/60/1	54.2	80	80
208/60/3	36.1	50	50
240/60/3	31.3	50	50
480/60/3	15.6	25	25

BOOSTER ELECTRICAL SPECIFICATIONS

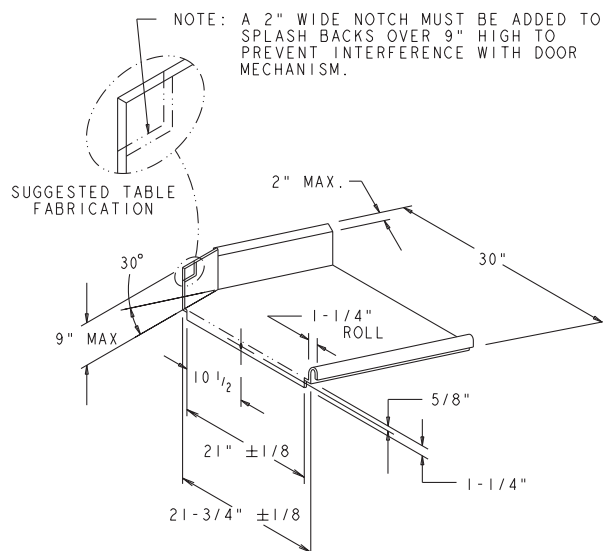
208/60/1
240/60/1
208/60/3
240/60/3
480/60/3

- 200/50/3
- 380-415/50/3
- THESE ELECTRICAL SPECIFICATIONS ARE NOT SUBMITTED FOR UL LISTING

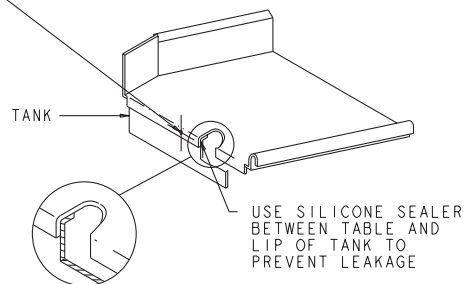
MODEL:
AM-14C W/ELECTRIC HEAT
00-892066
REV. C



TRACK & TABLE LAYOUT



- 5/16-18 SST TRUSS HD SCREW
- 5/16-18 SST LOCKWASHER
- 5/16-18 SST HEX HD NUT



AM-14C GAS



701 S Ridge Avenue, Troy, OH 45374
1-888-4HOBART • www.hobartcorp.com

WARNING

ELECTRICAL AND GROUNDING CONNECTIONS
MUST COMPLY WITH THE APPLICABLE
PORTIONS OF THE NATIONAL ELECTRICAL
CODE AND/OR OTHER LOCAL ELECTRICAL CODES.

PLUMBING CONNECTIONS MUST COMPLY
WITH APPLICABLE SANITARY, SAFETY,
AND PLUMBING CODES.

LEGEND CONNECTION INFORMATION (*AFF - ABOVE FINISHED FLOOR)

- E1 ELECTRICAL CONNECTION: MOTORS & CONTROLS.
1" OR 3/4" CONDUIT HOLE, 18-7/8" AFF.
- E2 ELECTRICAL CONNECTION: VENT FAN CONTROL,
1/2" CONDUIT HOLE, 26" AFF.
- E3 ELECTRICAL CONNECTION: GAS BOOSTER,
1/2" CONDUIT HOLE, 24" AFF.
- E4 ELECTRICAL CONNECTION: RINSE AGENT & SANITIZER FEEDERS,
1/2" CONDUIT HOLE, 22" AFF.
- P1 COMMON WATER CONNECTION:
(180° F WATER MIN. HOT WATER SANITIZING)
(120° F WATER MIN. CHEMICAL SANITIZING-NORMAL DUTY)
(130° F WATER MIN. CHEMICAL SANITIZING-LIGHT DUTY)
3/4" FPT, 55" AFF.
- P3 DRAIN: 2" FPT, 6-1/4" AFF PLUG L.H. SIDE BY HOBART. (R.H. DRAIN ONLY)
- P5 DETERGENT PROBE SENSOR: REMOVE CAP AND
STUD ASSEMBLY TO ACCESS 7/8" HOLE, 13-1/4" AFF
- P6 DETERGENT FEEDER: REMOVE CAP PLUG TO ACCESS
7/8" HOLE; 27-7/16" AFF.
- P7 RINSE AGENT FEEDER: 1/8" NPT, REMOVE 1/8" NPT
PIPE PLUG TO ACCESS TAPPED HOLE; 58-7/16" AFF.
- P8 SANITIZER FEEDER: (NORMAL/LIGHT DUTY) 1/8" NPT, REMOVE 1/8" NPT
PIPE PLUG TO ACCESS TAPPED HOLE; 58-7/16" AFF.
- P9 GAS CONNECTION - NAT. OR L.P. (WHEN ORDERED):
1/2" FPT, 8-1/2" AFF.

GAS HEATED DISHWASHERS

FOR NATURAL GAS, PRESSURE TO THE BURNER (CUSTOMER
CONNECTION) SHOULD NOT EXCEED 7" W.C.
FOR LIQUIFIED PETROLEUM GAS, PRESSURE TO THE BURNER
(CUSTOMER CONNECTION) SHOULD NOT EXCEED 11" W.C.
IF GAS PRESSURE IS HIGHER THAN 7" (NATURAL GAS) OR
11" (L.P.) W.C. A PRESSURE REGULATING VALVE MUST BE
INSTALLED (BY OTHERS) IN THE GAS LINE TO THE DISHWASHER.
GAS HEAT BTU INPUT - 20,000 NATURAL
20,000 PROPANE

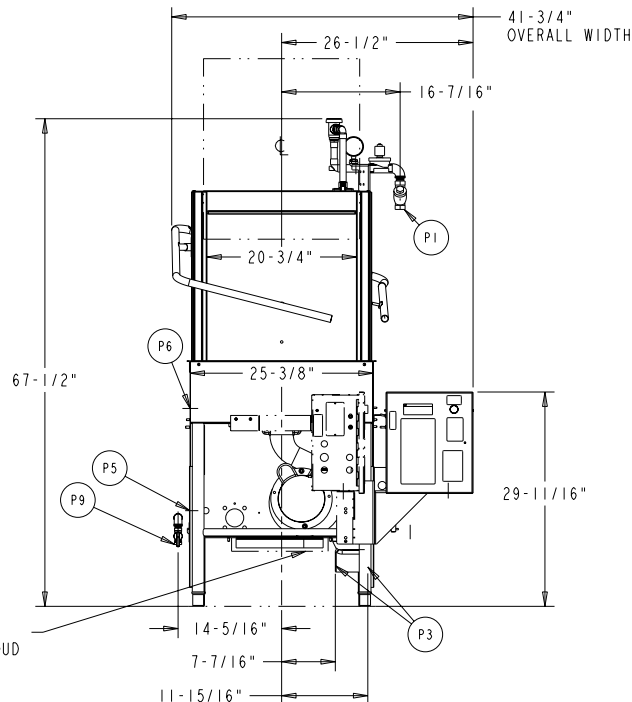
PLUMBING NOTES:

WATER HAMMER ARRESTOR (MEETING ASSE-1010 STANDARD
OR EQUIVALENT) TO BE SUPPLIED (BY OTHERS) IN
COMMON WATER SUPPLY LINE AT SERVICE CONNECTION.
RECOMMENDED WATER HARDNESS TO BE 2-6 GRAINS FOR BEST RESULTS.
RECOMMENDED BUILDING FLOWING WATER PRESSURE TO THE DISHWASHER
IS 20-25 PSI; IF PRESSURES HIGHER THAN 25 PSI ARE PRESENT, A
PRESSURE REGULATING VALVE WITH INTERNAL THERMAL EXPANSION BY
PASS, MUST BE SUPPLIED (BY OTHERS) IN THE WATER LINE TO THE
DISHWASHER.
FOR CONVENIENCE WHEN CLEANING, WATER TAP SHOULD BE
INSTALLED NEAR MACHINE WITH HEAVY DUTY HOSE AND
SQUEEZE VALVE.

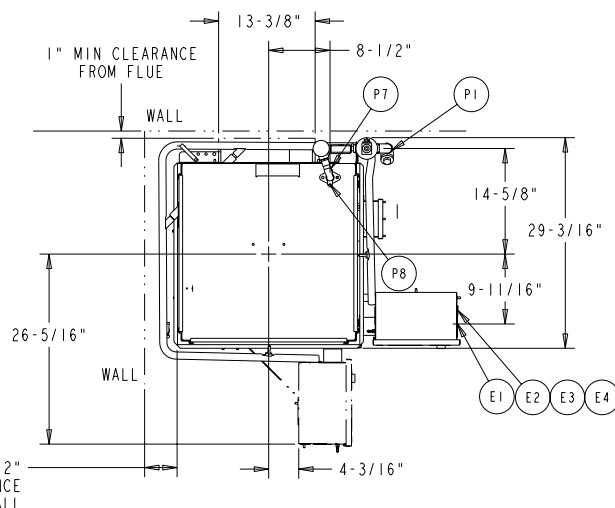
MISCELLANEOUS NOTES:

ALL DIMENSIONS TAKEN FROM FLOOR LINE MAY INCREASE 3/4"
OR DECREASE 1/2" DEPENDING ON LEG ADJUSTMENT.
NET WEIGHT OF MACHINE: 300 LBS. W/O BOOSTER
DOMESTIC SHIPPING WEIGHT: 402 LBS. W/O BOOSTER
NET WEIGHT OF MACHINE: 368 LBS. W/BOOSTER
DOMESTIC SHIPPING WEIGHT: 470 LBS. W/BOOSTER
SIZE OF RACKS - 19-3/4" X 19-3/4"
DRAIN LEVER LOCATED INSIDE TANK.
VENT HOOD (IF REQUIRED) TO PROVIDE 100 CFM EXHAUST
1 H.P. MOTOR
• CONTROL BOX SHIPPED: 4-11/16" BELOW DISH TABLE
ADJUSTMENT: 11/16" TO 10-11/16" BELOW DISH TABLE

MODEL:
AM-14C W/GAS HEAT
00-892066
REV. C

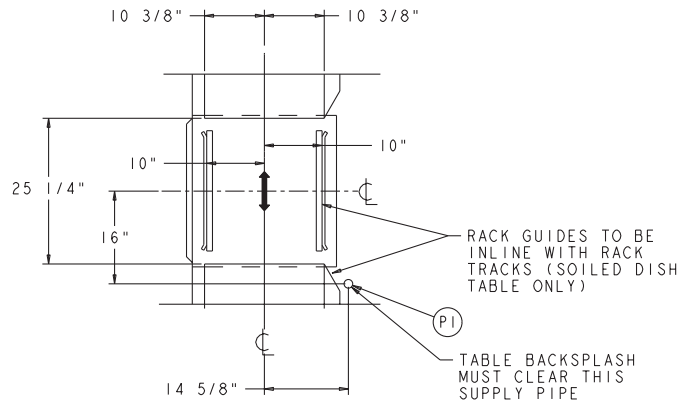
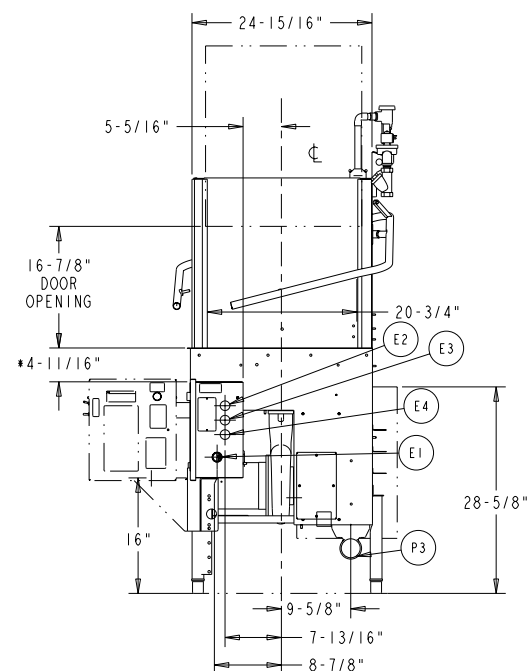
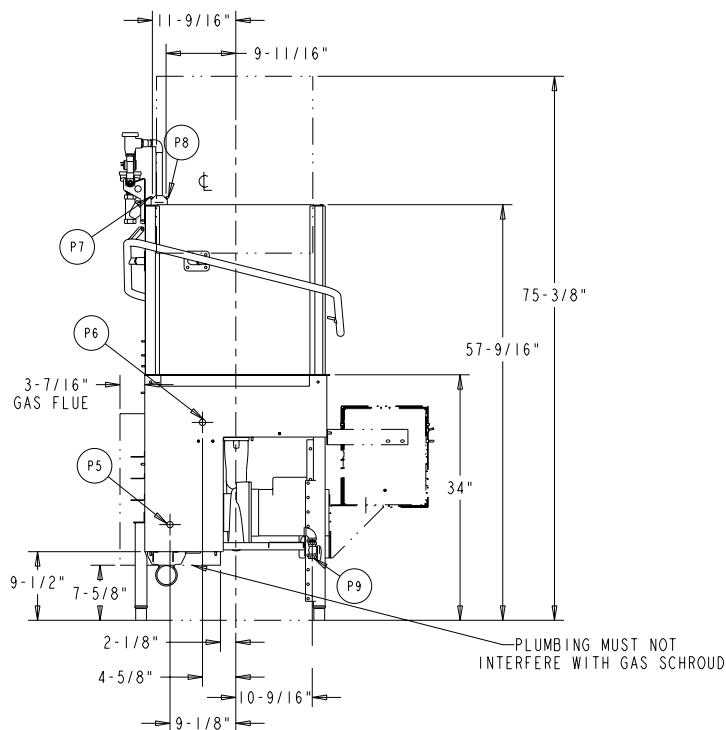


PLUMBING MUST NOT
INTERFERE WITH GAS SCHROUD

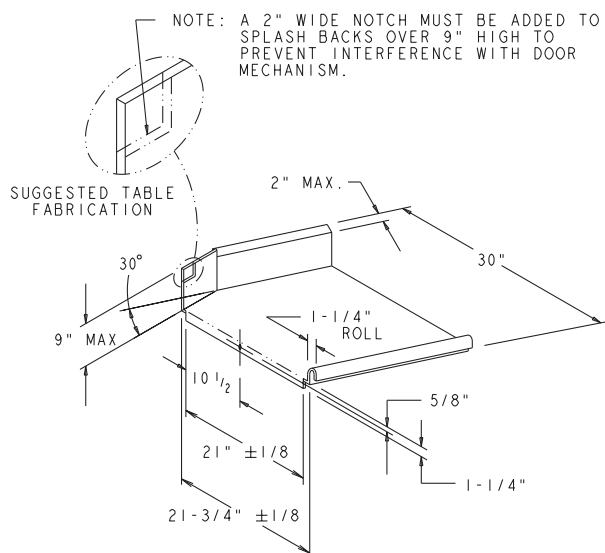


AM-14C WITH GAS HEAT			
ELEC. SPECS.	RATED AMPS	MINIMUM SUPPLY CIRCUIT CONDUCTOR AMPACITY	MAXIMUM OVERCURRENT PROTECTIVE DEVICE
208-240/60/1	11.4	15	15
208-240/60/3	7.6	15	15
480/60/3	5.3	15	15

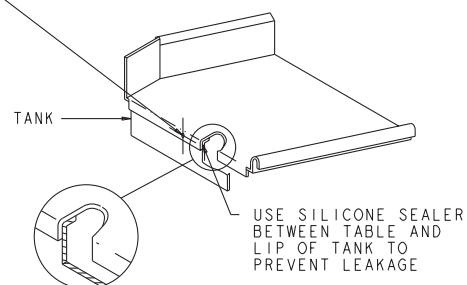
MACHINE
ELECTRICAL
SPECIFICATIONS
208-240/60/1
208-240/60/3
480/60/3



TRACK & TABLE LAYOUT



- 5/16-18 SST TRUSS HD SCREW
- 5/16-18 SST LOCKWASHER
- 5/16-18 SST HEX HD NUT



AM-14/AM-14C DISHWASHERS



701 S Ridge Avenue, Troy, OH 45374
1-888-4HOBART • www.hobartcorp.com

The microcomputer-based control system is built into the AM-14 Series Dishwashers. Model AM-14 is for straight-thru operation with a third (front) door for inspection, and AM-14C for corner installation. Each is available in standard electrical specifications of 208-240/60/1, 208-240/60/3, 480/60/3 and all are equipped with a reduced voltage pilot circuit transformer.

***CAUTION: CERTAIN MATERIALS, INCLUDING SILVER, ALUMINUM AND PEWTER ARE ATTACKED BY SODIUM HYPOCHLORITE (LIQUID BLEACH) IN THE CHEMICAL SANITIZING DISHWASHER MODE OF OPERATION. WATER HARDNESS MUST BE CONTROLLED TO 2-6 GR. FOR BEST RESULTS.**

CONSTRUCTION: Tank and wash chamber constructed of #16 gauge stainless steel, arc-welded. Unitized welded stainless steel tank, frame and stainless steel feet. Wash chamber and front of tank above motor compartment are polished satin finish. Stainless steel snap-in front panel – no fasteners required.

DOOR LIFT: Doors coupled by stainless steel door handle, spring counterbalanced (except the front inspection door). All doors guided for ease of operation and long life.

PUMP: With Ni-Resist impeller, integral with motor assures alignment and quiet operation. Pump shaft seal with stainless steel parts and a carbon ceramic sealing interface. Easily removable impeller housing permits ease of inspection. Capacity 160 GPM. Pump is completely self-draining.

MOTOR: Built for Hobart, 1 H.P., with inherent thermal protection, grease-packed ball bearings, splashproof design, ventilated. Single-phase is capacitor-start, induction-run type. Three-phase is squirrel-cage, induction type.

MICROCOMPUTER CONTROL SYSTEM: Hobart microcomputer controls, assembled within water-protected enclosure, provide built-in performance and reliability.

The microcomputer control, switches and contactors are housed in a single stainless steel enclosure, mounted on right-hand or left-hand side (AM14) or 90° (AM14C) of dishwasher below table level. Control enclosure is field adjustable to an alternate lower position of 10¹¹/₁₆" from table. The line voltage electrical components are completely wired with 105°C, 600V thermoplastic insulated wire with stranded conductors and routed through listed electrical conduit. Low-voltage electrical components are wired with type ST cord. Line disconnect switch NOT furnished.

CYCLE OPERATION: The microcomputer timing program is started by closing the doors, which actuates the door cycle switch. The microcomputer energizes the wash pump motor contactor during the wash portion of the program. After the wash, a dwell permits the upper wash manifold to drain. At the end of the dwell, the final rinse solenoid valve is energized, after the final rinse valve closes, Sani-Dwell (Hot Water Mode only) permits sanitization to continue. The Rinse LED remains on during this period, completing the program. If the microcomputer is interrupted during a cycle by the door-cycle switch, the microcomputer is reset to the beginning of the program. **Hot Water Sanitizing – 62 seconds (AM14: 53 Racks/hr.; AM14C: 52 Racks/hr.):** 40 Second Wash, 4 Second Dwell, 9 Second Rinse, 9 Second Sani-Dwell. **Chemical Sanitizing (Normal Duty) – 53 Seconds (AM14: 62 Racks/hr.; AM14C: 60 Racks/hr.):** 40 Second Wash, 4 Second Dwell, 9 Second Rinse. **Chemical Sanitizing (Light Duty) – 40 Seconds (AM14: 80 Racks/hr.; AM14C: 76 Racks/hr.):** 27 Second Wash, 4 Second Dwell, 9 Second Rinse (130°F Minimum). All of the above programs and many more can be pre-selected by your Hobart service technician.

WASH: Hobart revolving stainless steel wash arms with unrestricted openings above and below provide thorough distribution of water jets to all dishware surfaces. Arms are easily removable for cleaning and are interchangeable. Stainless steel tubing manifold connects upper and lower spray system.

RINSE: Upper revolving rinse arm with eight rinse spray nozzles. The stainless steel upper and lower rinse arms are easily removable without tools. Lower revolving rinse arm with eight nozzles lifts out for inspection. Diaphragm-type rinse control solenoid valve mounted outside machine. Machine is equipped with special hot water vacuum breaker on downstream side of rinse valve – mounted 6" above uppermost rinse opening. Easy open brass line strainer furnished.

FILL: Microcomputer controlled fill valve installed on upstream side of rinse vacuum breaker. Ratio fill method is used giving the correct fill at any flowing water pressure. (20 PSIG necessary for proper rinsing.)

DRAIN AND OVERFLOW: Large bell type automatic overflow and drain valve controlled from inside of machine. Drain automatically closed by lowering doors. Drain seal is large diameter, high temperature "O" ring. Cover for overflow is integral part of stainless steel strainer system.

STRAINER SYSTEM: Equipped with large, exclusive self-flushing, easily removable perforated stainless steel strainer and large capacity soil basket. Submerged soil basket minimizes frequent removal and cleaning.

HEATING EQUIPMENT: Standard tank heat is 5KW electric immersion heating element. Regulated power immersion tube gas burner system is optional at extra cost. A solid-state ignitor board controls the gas valve and provides flame ignition. A transformer steps the control circuit voltage down to 24 volts to power the ignitor board and gas valves. Gas Heated Dishwasher: For natural gas, gas pressure (customer connection) not to exceed 7" W.C. For liquified petroleum, gas pressure to burner (customer connection) not to exceed 11" W.C. If gas pressure is higher than 7" W.C. natural or 11" W.C. LP, a pressure regulating valve must be supplied (by others) in the gas line to the dishwasher. Water temperature regulation is controlled by thermistor sensor in combination with microcomputer controls. The tank heat and positive low water protection microcomputer circuits are automatically activated when the main power switch is turned "on". If tank is accidentally drained, low water protection device automatically turns heat off. Gas immersion tube is additionally protected by a high limit device mounted on the surface of the tube. These features are standard with the Hobart Microcomputer Control System.

STANDARD EQUIPMENT: In addition to the standard features listed on the front are the following—latest design door cycle switch, ratio fill, stainless steel adjustable feet. Adjustable height control panel. Chamber, tank and all doors of 16 gauge stainless steel. Detergent injector and sensing connections provided as well as connection in fill line for rinse agent and sanitizer dispensing. Manual by-pass switch.

OPTIONAL EQUIPMENT AT EXTRA COST – ELECTRIC BOOSTER HEATER: Electric booster adequately sized to raise 110°F inlet water to 180°F (not available on gas heat machines). Pressure gauge for incoming water.

CONTROLS: Optional 90° controls on C models.

ACCESSORIES: 19³/₄" x 19³/₄" Peg and Combination All-Plastic Dishracks. Desirable functional accessories can be furnished at added cost. See listed options and accessories on this specification sheet. Write to the factory for special requirements not listed above.

As continued product improvement is a policy of Hobart, specifications are subject to change without notice.