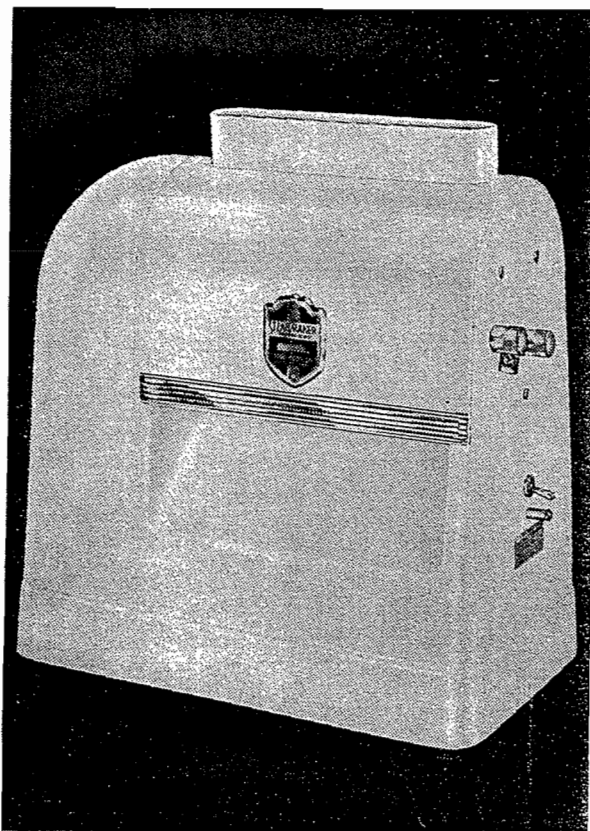


INSTRUCTION MANUAL

. . . with Catalog of Replacement Parts



HOBART MODEL 200 STEAKMAKER*

(Steakmaker* tenderizers are manufactured by Hobart-Federal Engineering Corp., a Hobart subsidiary.)

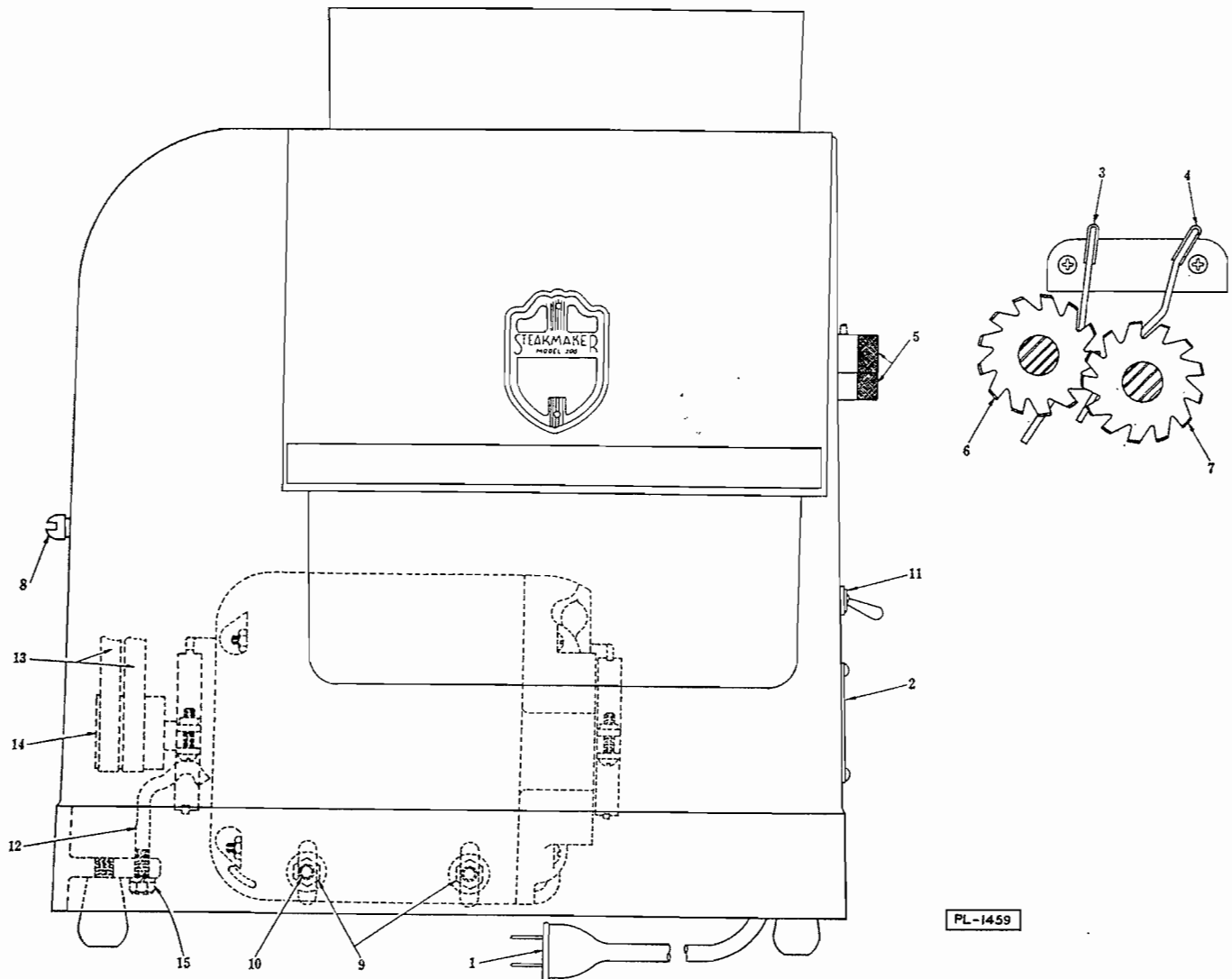
Model	Spec.	Machine
200	#200-38	Standard Machine (1725 RPM Motor)
200	#200-46	Standard Machine (1725 RPM Motor, 3 Ph)
200	#200-34	Standard Machine (1425 RPM Motor)
200S	#200-47	N. Y. Machine (1725 RPM Motor) (Cast Feed Chute) (B. S.A.)
200S	#200-51	Machine Painted (1425 RPM Motor) (Includes Cast Feed Chute & Safety Switch)
200	#200-52	Standard Machine (1725 RPM Motor) (No Knit)
200S	#200-S-52	N. Y. Machine (1725 RPM Motor) (No Knit) (Includes Feed Chute & Safety Switch)

THE HOBART MANUFACTURING COMPANY



The World's Oldest and Largest Manufacturer of Computing Scales
and Food Store, Kitchen, Bakery and Dishwashing Machines

TROY, OHIO, U. S. A.



Instructions for Operation and Care of Model 200 Steakmaker

CONNECTIONS: All machines are furnished with cord and plug (1). Be sure line current available is the same as specified on the Machine Serial Plate (2) before plugging into socket.

OPERATION: Use only boneless meats. Large slices should be under $3/4$ " thick. Meats that have a low fiber content should be run through two to four times at different angles. More fibrous cuts should be run through from three to six times, as desired, to increase tenderness. To save extra operations and increase tenderness, pull out the excess sinews. Various combinations with different kinds of meat may be blended, by feeding through separately, then feeding through together.

Caution: Observe all safety rules with this machine that would apply to any razor-edged tool.

BLADE ROLLERS:**To Remove:**

1. Remove the Front (3) and Back (4) Stripper.
2. Unlock and remove both Slip Bearings (5).
3. With a pad of cloth in the hand (to protect from blades), back the Front Roller (6) to the right, out of the drive socket. Lift up and out. Do the same with the Back Roller (7).

To Replace:

1. Install the Back Roller and unlocked Slip Bearing.
2. Assemble the Back Stripper (4).
3. Assemble the Front Roller with Blades meshed to the left of the Back Roller.
4. Install the front Slip Bearing and lock both the front and rear Slip Bearings (5).
5. Assemble the Front Stripper (3).

CLEANING:

1. Remove both Rollers, Front (6) and Back (7) and Strippers (3 and 4).
2. Place Back Roller in FRONT Roller position and use Cleaning Fork between revolving Blades.
3. Remove Back Roller and place Front Roller in FRONT Roller position and clean.
4. Flush both Rollers and Strippers under hot running water.

BLADE SHARPENING:

1. Remove both Rollers and Strippers.
2. Place Back Roller in BACK Roller position.
3. Hold File between revolving Blades until Blades are sharp.
4. Remove Back Roller, place Front Roller in FRONT Roller position and sharpen.
5. Flush both Rollers with hot running water to remove filings.

CAUTION: NEVER CLEAN OR SHARPEN THE BLADES WITH BOTH ROLLERS IN POSITION.

ROLLER ASSEMBLY: Due to the close relationship between Front and Back Rollers, any replacement of more than six blades or six Spacers or a combination of the two, should NOT be serviced in the field.

OVERLOAD: If the machine stalls, turn off the switch immediately. If it is overloaded or clogged, back the meat out by reversing the rotation of the Roller Units manually. To do this, use the edge of the Cleaning Fork or a similar tool in the slotted Reversing Screw (8). Dull blades or loose belts will cause the machine to stall easily. See paragraph on sharpening blades.

To tighten belts, loosen both Motor Retaining Nuts (9) slightly. Next, turn belt tightener nut (15) clockwise until proper belt tension is reached. Lock motor into position by re-tightening nuts (9).

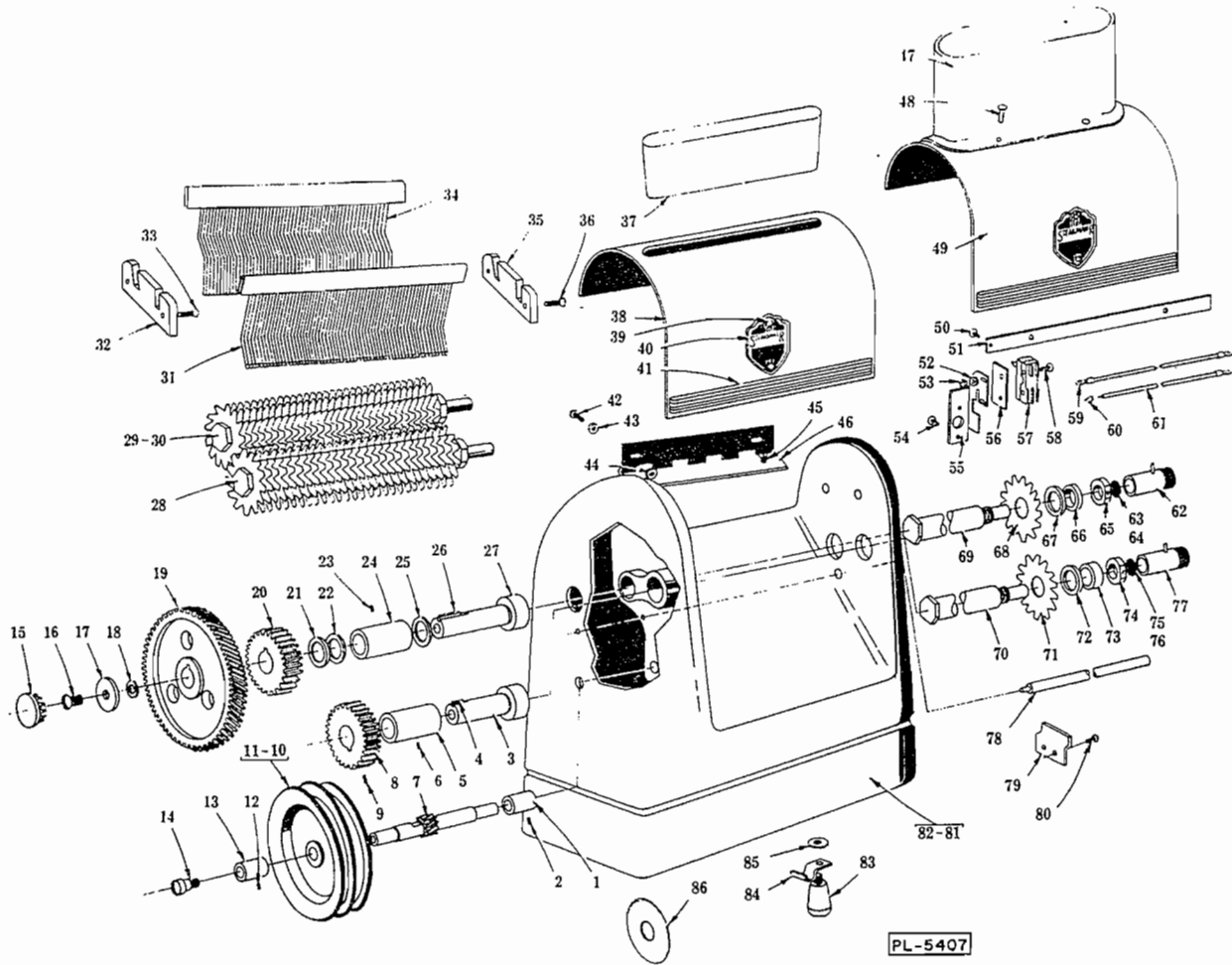
LUBRICATION: Self-lubricated bearings (except the motor) are used throughout this machine so will require no lubrication. The motor is equipped with sleeve type bearings lubricated from a large wick filled reservoir. Under normal operation the motor will not require lubrication for at least two years, but under heavy operation (as in Locker and Packing plants) yearly lubrication is recommended. To oil the motor, lay the machine on its back. Motors with visible oilers may then be oiled. Other motors require removal to gain access to the oilers. To remove these motors, use the following method:

1. Remove nuts (9) and screws (10).

Caution: Care should be taken at all times to protect the motor leads to the switch (11). If desired, the leads may be further protected by simply removing switch from the machine.

2. Unhook belt tightener (12).
3. Disassemble belts (13) from motor pulley (14).

To re-assemble the motor, reverse the above procedure.



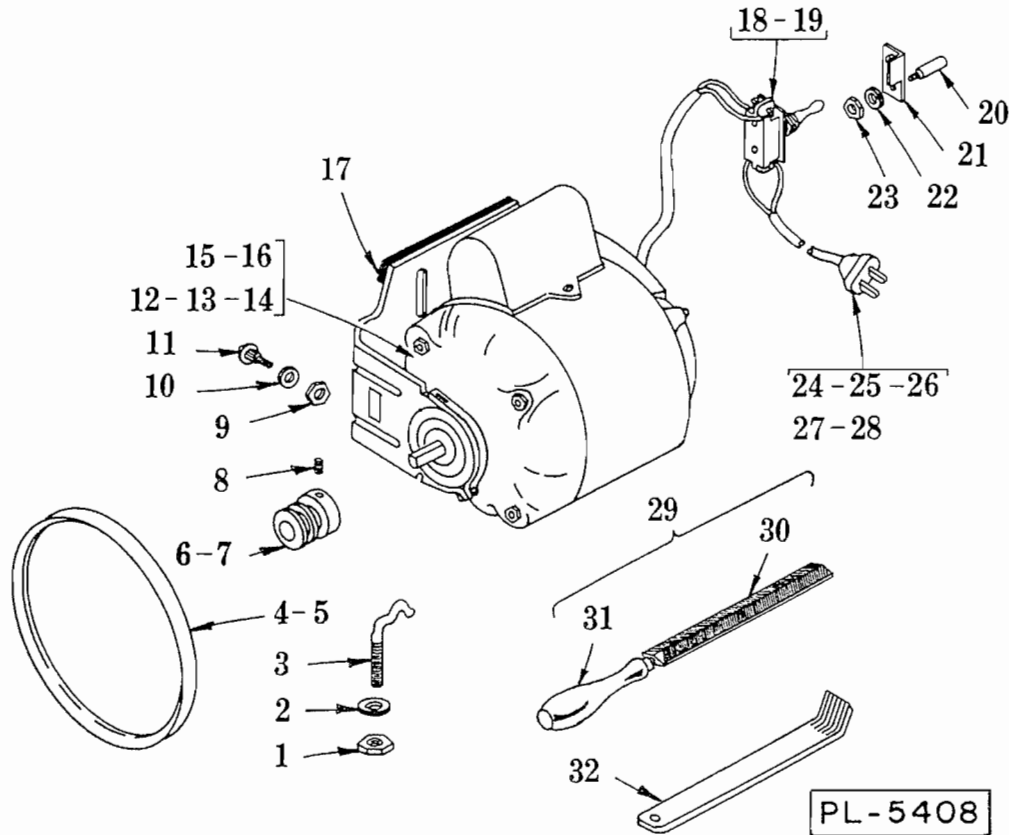
PL-5407

BODY, GEARING AND LIFT-OUT UNIT

ILLUS. PL-5407	PART NO.	NAME OF PART	AMT.
1	149	Cap Bearing -----	1
2	559	Set Screw - Special -----	1
3	148	Shaft - Front Stub -----	1
4	280	Key - 3/16" Sq. x 7/16" Lg. -----	1
5	151	Bearing -----	1
6	559	Set Screw - Special -----	1
7	142	Shaft - Pinion (11 T) -----	1
8	146A	Gear (32T) (Incls. item #9) -----	1
9	SC-47-4	Set Screw - #10-24 x 3/8" Soc. Hdls. Kn. Cup Pt. -----	1
10	559	Set Screw - Special -----	2
11	141	V-Pulley -----	1
12	559	Set Screw - Special -----	1
13	150	Bearing -----	1
14	143	Screw - Reversing -----	1
15	162	Cover - Hole -----	2
16	SC-9-41	Mach. Screw - 1/4"-20 x 3/8" Rd. Hd. -----	1
17	WS-3-51	Washer -----	1
18	WL-3-37	Lock Washer - 1/4" x .109" x .062" -----	1
19	144	Gear (77T) -----	1
20	145	Gear (32T) -----	1
21	WS-11-43	Washer (1/16" thk.) -----	1
22	WS-11-44	Washer (1/64" thk.) -----	As Reqd.
23	559	Set Screw - Special -----	1
24	151	Bearing -----	1
25	WS-11-43	Washer (1/16" thk.) -----	1
26	281	Key - 3/16" Sq. x 15/16" Lg. -----	1
27	147	Shaft - Back Stub -----	1

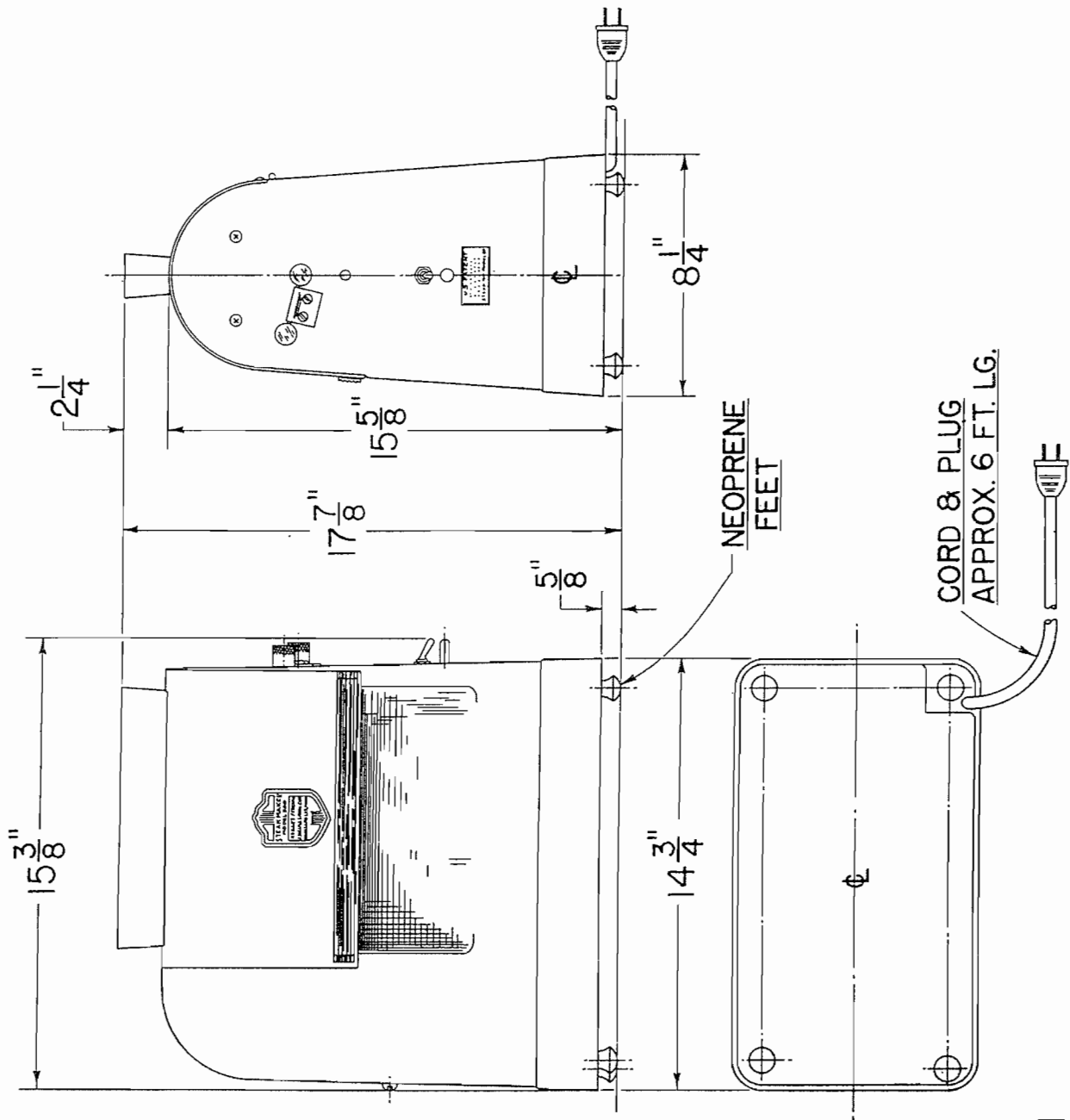
BODY, GEARING AND LIFT-OUT UNIT (Cont.)

ILLUS. PL-5407	PART NO.	NAME OF PART	AMT.
28	105A-2	Front Roller Unit Assy. (Incls. items #70, 71, 72, 73 & 74) -----	1
29	713-A	Back Roller Unit (No Knit) (Incls. items #65, 66, 67, 68, 69 & 86) --	1
30	108A-2	Back Roller Unit Assy. (Incls. items #65, 66, 67, 68 & 69) -----	1
31	117A-2	Stripper - Front -----	1
32	126	Hanger - Left -----	1
33	SC-17-6	Mach. Screw - #10-24 x 3/4" Phil. Oval Hd. -----	2
34	118A-2	Stripper - Back -----	1
35	125	Hanger - Right -----	1
36	SC-17-6	Mach. Screw - #10-24 x 3/4" Phil. Oval Hd. -----	2
37	468A	Chute - Feed -----	1
38	137A	Cover Assy. (Incls. items #39, 40 & 41) -----	1
39	PE-3-1	Pin - #16 x 3/8" Escutcheon -----	2
40	134-1	Plate - Name -----	1
41	135	Panel - Cover Trim -----	1
42	SC-18-9	Mach. Screw - #10-24 x 3/8" Slotted Pan Hd. -----	2
43	WS-3-33	Washer -----	2
44	NS-9-25	Mach. Nut - #10-24 Hex -----	2
45	SC-10-22	Mach. Screw - 1/4"-20 x 5/16" Truss Hd. -----	2
46	129	Hinge -----	1
47	476-2	Chute - Feed -----	1
48	RS-14-5	Rivet - 1/8" Dia. x 3/8" Lg. Rd. Hd. -----	4
49	496A	Cover Assy. (B.S.A. Approved) (Incls. items #38, 47 & 48) -----	1
50	SC-10-4	Mach. Screw - #6-32 x 1/4" Truss Hd. -----	1
51	479	Bar - Switch Activating -----	1
52	WL-3-8	Lock Washer - #6 x .047" x .031" -----	2
53	NS-9-7	Mach. Nut - #6-32 Hex -----	2
54	SC-10-24	Mach. Screw - #10-24 x 3/8" Truss Hd. -----	2
55	470	Bracket - Switch -----	1
56	474	Insulator - Fiber -----	1
57	385	Switch - Unimax -----	1
58	SC-9-85	Mach. Screw - #6-32 x 1-1/4" Rd. Hd. -----	2
59	622A	Lead - Switch -----	1
60	FE-6-17	Connector - Wire -----	1
61	481A	Lead - Switch -----	1
62	120A	Bearing - Slip -----	1
63	155	Plug Washer (1/16" thk.) -----	As Req'd.
64	156	Plug Washer (1/64" thk.) -----	As Req'd.
65	112	Nut - Back Lock -----	1
66	110	Collar - Back -----	1
67	573	Spacer -----	43
68	101-1	Blade -----	44
69	107A	Back Blade Shaft Assy. -----	1
70	104A	Front Blade Shaft Assy. -----	1
71	101-1	Blade -----	44
72	573	Spacer -----	43
73	109	Collar - Front -----	1
74	111	Nut - Front Lock -----	1
75	155	Plug Washer (1/16" thk.) -----	As Req'd.
76	156	Plug Washer (1/64" thk.) -----	As Req'd.
77	120A	Bearing - Slip -----	1
78	128	Bar - Guard -----	1
79	124	Plate - Lock -----	1
80	SC-7-72	Mach. Screw - #10-24 x 1/4" Rd. Hd. -----	2
81	121	Body -----	1
82	729-A	Body & B.S.A. Plate Sub-Assy. (Incls. item #81) -----	1
83	123-1	Foot -----	4
84	220	Clip - Cord -----	1
85	WS-17-16	Washer (Use with Left Rear Foot ONLY) -----	1
86	712	Blade - Round (No Knit) -----	14
	732	Blade - Star -----	As Req'd.
	876A-1	Safety Conversion Kit (Incls. items #47, 48, 50, 51, 52, 53, 54, 55, 56, 57, 58, 59, 60 & 61) -----	1



MOTOR AND MISCELLANEOUS

ILLUS. NO.	PART NO.	NAME OF PART	AMT.
1	NS-13-7	Full Nut - 1/4"-28 Hex Fin. -----	1
2	WL-3-37	Lock Washer - 1/4" x .109" x .062" -----	1
3	138	Tightener - Belt -----	1
4	BV-3-30	V-Belt (19") (Order in Matched Pairs Only) (1725 RPM Motor) -----	2
5	BV-3-35	V-Belt (20") (Order in Matched Pairs Only) (1425 RPM Motor) -----	2
6	140	V-Pulley - Motor (1-3/8" O. D.) (1725 RPM Motor) -----	1
7	140-2	V-Pulley - Motor (1-5/8" O. D.) (1425 RPM Motor) -----	1
8	559	Set Screw - Special -----	1
9	NS-9-41	Full Nut - 5/16"-18 Hex Fin. -----	2
10	WS-17-16	Washer -----	2
11	273-1	Bolt - Motor -----	2
12	694-1	Motor - 1 Ph. (115 V., 60 Cy.) -----	1
13	694-2	Motor - 1 Ph. (230 V., 60 Cy.) -----	1
14	694-3	Motor - 1 Ph. (115/230 V., 50 Cy.) -----	1
15	695	Motor - 3 Ph. (220 V., 50-60 Cy.) -----	1
16	700	Motor - D.C. (115 V.) -----	1
17	186	Dortite (6" Lg.) -----	1
18	161	Switch -----	1
19	466	Switch - Toggle (3 Pole) -----	1
20	127-1	Guard - Switch -----	1
21	286	Lock - Switch -----	1
22	WL-6-7	Lock Washer - #10 x .062" x .047" -----	1
23	NS-9-25	Mach. Nut - #10-24 Hex -----	1
24	548A	Cord & Plug Assy. (2 Conductor, Under 125 V.) -----	1
25	550A	Cord & Plug Assy. (3 Conductor, Under 150 V.) -----	1
26	551A	Cord & Plug Assy. (3 Conductor, 200-250 V.) -----	1
27	580A	Cord Only (Less Plug) (3 Cond.) -----	1
28	464A	Cord & Plug Assy. (3 Conductor, 3 Ph.) (Not UL Approved) -----	1
29	278A-1	File & Handle Assy. (Incls. items #30 & 31) -----	1
30	184-1	File - Web Saw (6") -----	1
31	185	Handle - File -----	1
32	157	Fork - Cleaning -----	1



R-23469

PL-3036

INSTALLATION DIAGRAM