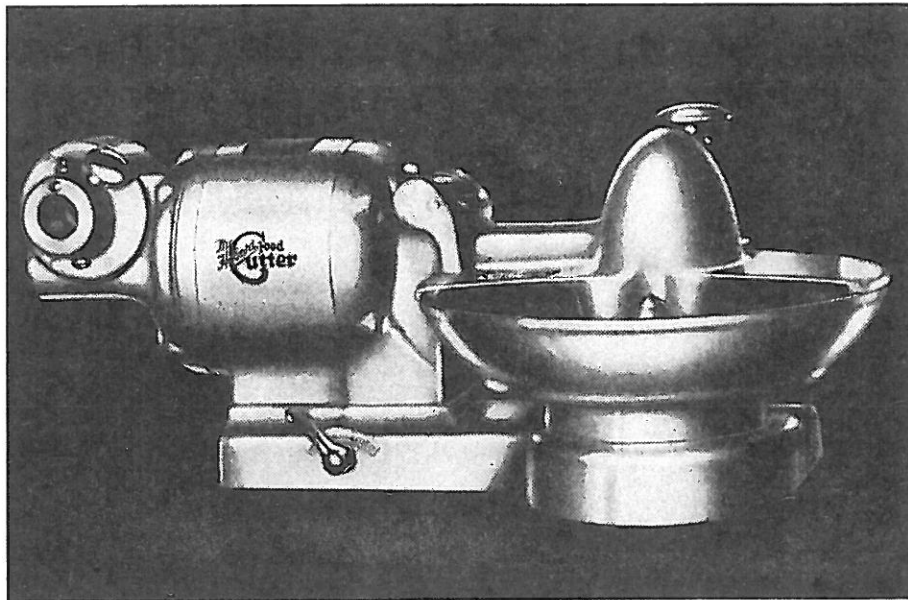


INSTRUCTION MANUAL

with Catalog of Replacement Parts



MODEL 8141 or 84141 FOOD CUTTER

WITH GEAR ATTACH.
SPEC. 6244 - Model 84141

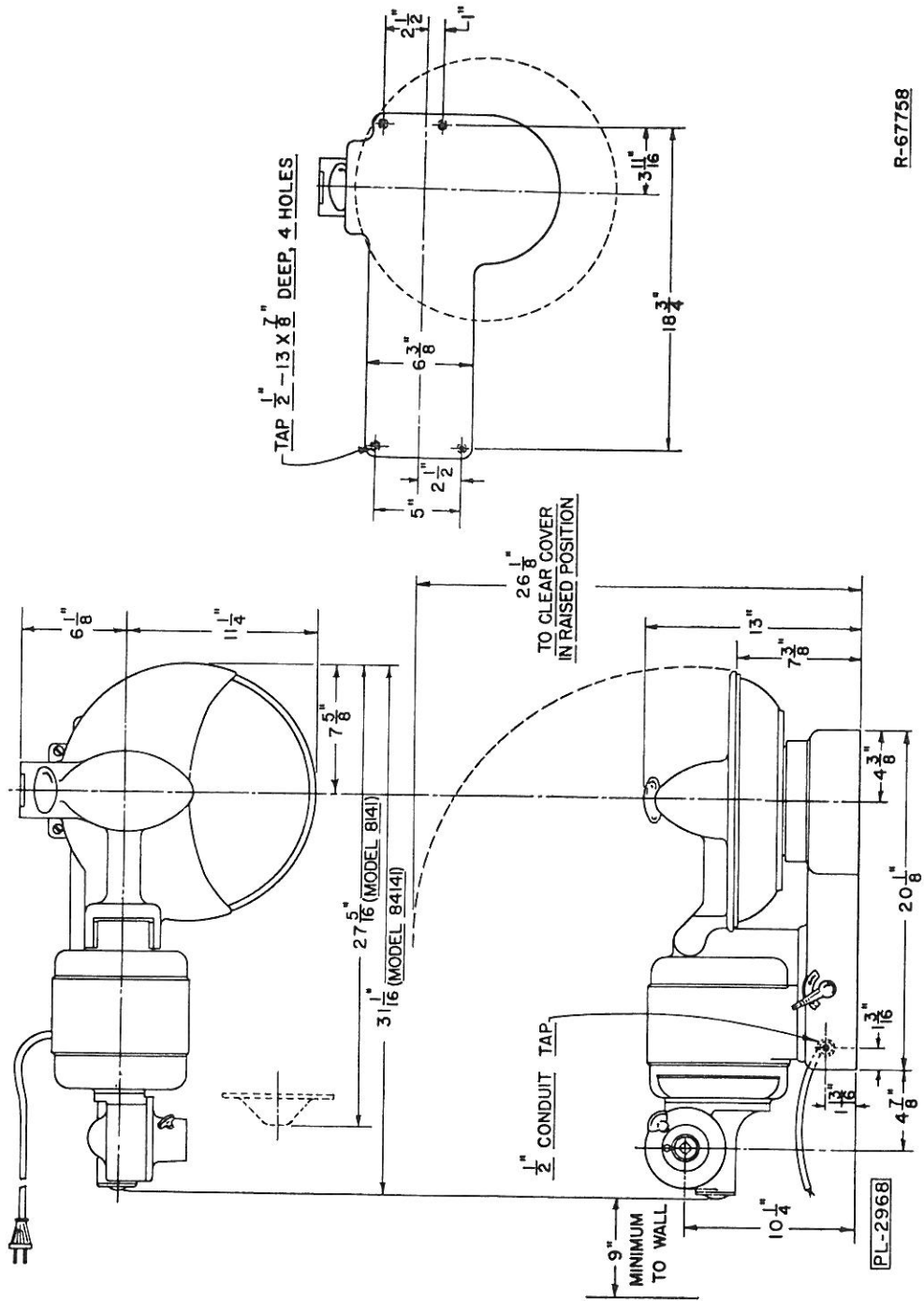
WITHOUT GEAR ATTACH.
SPEC. 6245 - Model 8141



THE HOBART MANUFACTURING COMPANY

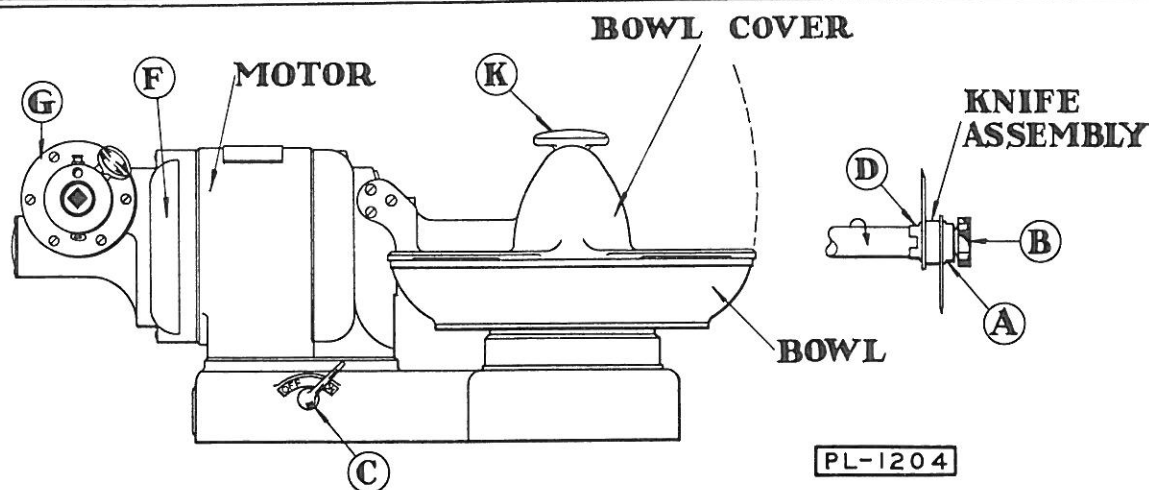
*The World's Oldest and Largest Manufacturer of Computing Scales and
Food Store, Kitchen, Bakery and Dishwashing Machines*

TROY, OHIO, U. S. A.



R-67758

INSTALLATION DIAGRAM



Instructions For Operation and Care of Models 8141 and 84141 Food Cutters

CONNECTIONS:

Before making any electrical connections, **CHECK THE SPECIFICATIONS ON THE NAME PLATE TO MAKE SURE THEY AGREE WITH THOSE OF YOUR ELECTRICAL SERVICE.** Connect multiphase motors so that the knives run downward when viewed from the front of the machine (see arrow).

COVER LOCK & SAFETY DEVICES:

Any knife, revolving or otherwise, is a source of danger. **CAUTION: KEEP HANDS FROM UNDER COVER AT ALL TIMES** (as designated on "Caution Plate" attached to bowl cover). To safeguard the operator, the cover is locked down when the current is turned on and cannot be unlocked until the current is shut off. **NEVER LIFT BOWL COVER UNTIL THE KNIVES HAVE STOPPED TURNING.** When the bowl cover is up, the motor switch cannot be turned on. To lift the cover, turn the control handle C to "OFF" then after the motor stops give the knob K a quarter turn to the right and lift the cover with it. To start the motor, close down the bowl cover and lock it by pressing down on knob K and turn to the left. Then move the handle C to "ON". Just closing the cover is not sufficient, it must be locked before handle C can be moved. To remove the cover entirely, swing it to the vertical position and then lift straight up.

CLEANING:

DO NOT ATTEMPT TO CLEAN OR REMOVE THE BOWL UNTIL AFTER REMOVAL OF THE KNIFE ASSEMBLY. To remove the knife assembly: lift the Bowl Cover, turn the knives by hand to clear the comb, unscrew the knob B and slide the assembly from the shaft. This method does not disturb knife adjustment.

KNIVES:

When shipped from the factory the knives are properly placed and adjusted. Keep them sharp at all times. To sharpen knives, remove the

knife assembly described in Cleaning paragraph.

If necessary to re-adjust the knives, first loosen the nut A. While loosening this nut with one wrench, hold another wrench on the flats at D to prevent the sleeve turning. When properly set, the knives should come within one-sixteenth of an inch to touching the bowl. Turn knives slowly by hand to be sure they do not strike at any point. The knife that is beveled on one side only, must be placed on the side nearer the motor. Both knives must be set to cut downward when viewed from the front.

BOWL:

ALWAYS REMOVE KNIFE ASSEMBLY BEFORE CLEANING OR REMOVING BOWL. See Cleaning paragraph. When removing the bowl: lift the bowl cover, **REMOVE THE KNIFE ASSEMBLY** and then the comb. Next, give the bowl a fraction of a turn to the right and lift it out. After washing, rinsing, and drying the bowl, rub a little grease on the finished seat to prevent rusting. A little tallow rubbed on the surface of the bowl cover that makes contact with the bowl will prevent rusting at that point and insure smooth operation.

LUBRICATION:

The bearings and gear cases are packed with special grease. Have a Hobart service man check the grease at least once a year.

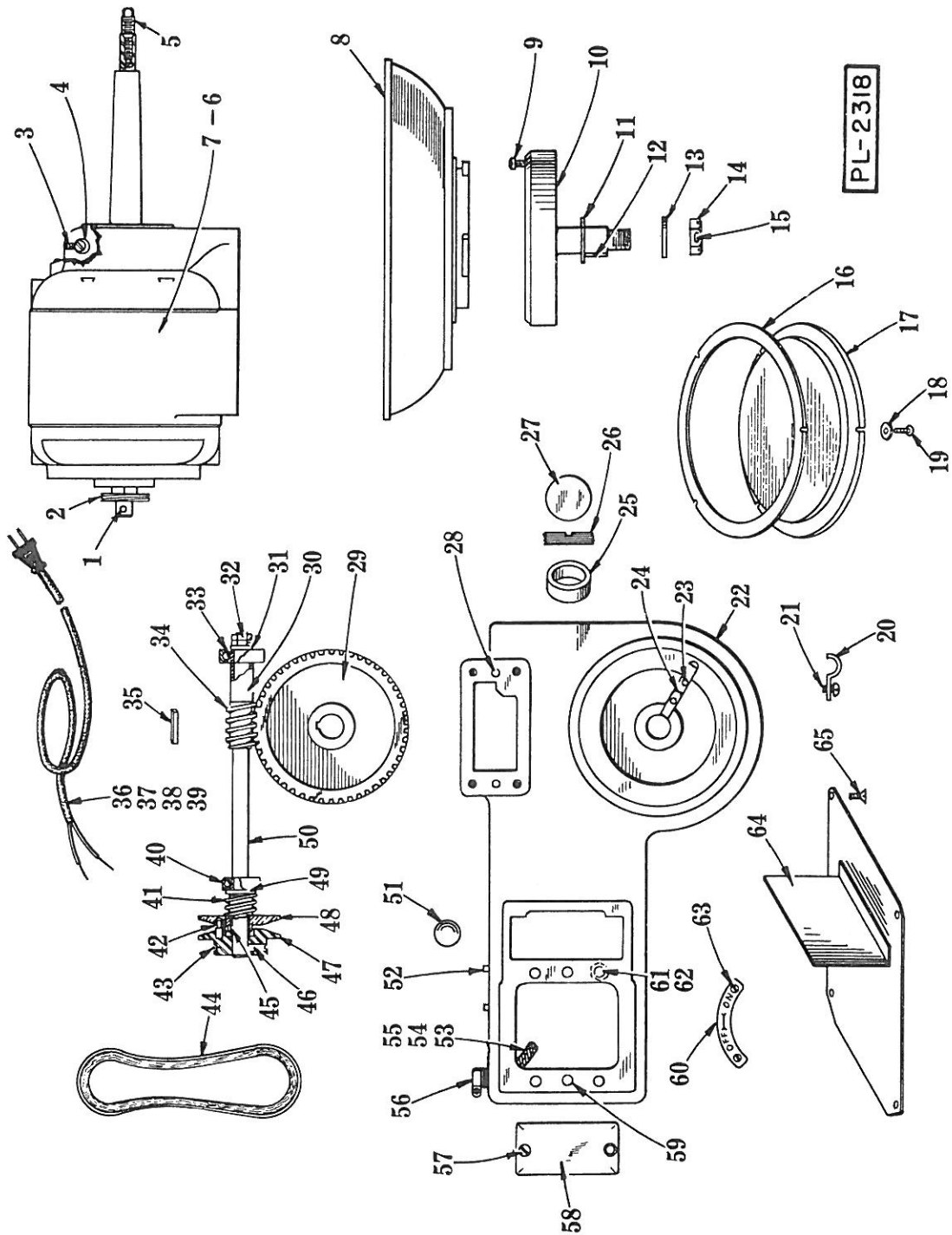
MOTOR:

If your motor has removable covers F, this indicates that it has a commutator and brushes, and should be serviced at least twice a year.

ATTACHMENT:

If your machine has an attachment socket G, you can use the following No. 12 Attachments:

- Meat and Food Chopper
- Vegetable Slicer (with additional plates for shredding, grating, and cutting french-fry or Julienne potatoes.)
- Tool Sharpener
- Fruit Juice Extractor



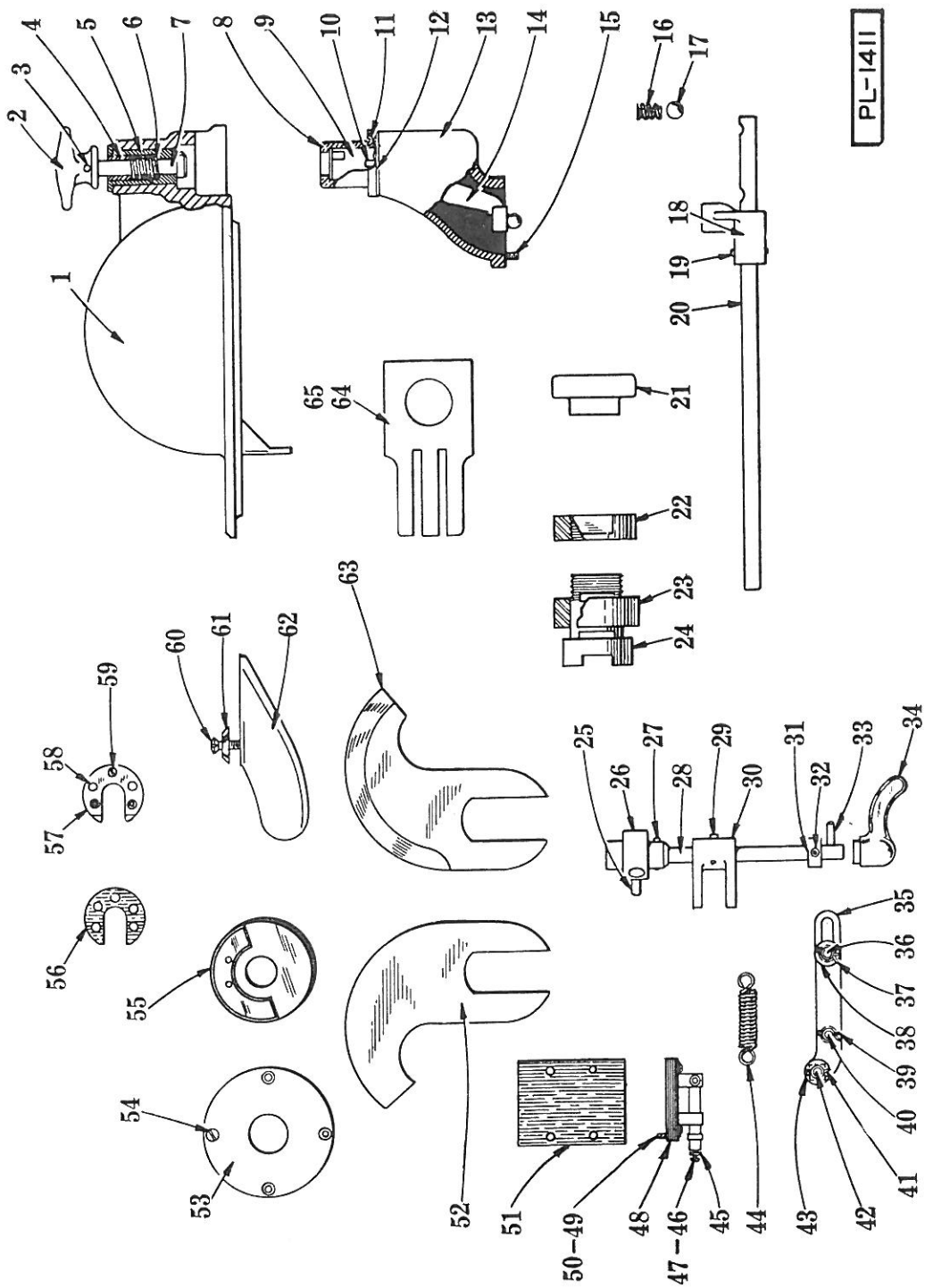
PL-2318

MOTOR, BASE, AND BOWL UNIT

HOBART REPLACEMENT PARTS

MOTOR, BASE, AND BOWL UNIT

ILLUS. PL-2318	PART NUMBER	NAME OF PART	AMT.
1	P-11800-91	Dowel	1
2	V-8066	Deflector - Grease	1
3	SC-46-32	Set Screw - 1/4"-20 x 1/2" Cup Pt.	1
4	M-23753	Hinge Pin - Lid	1
5	M-17933	Insert - Knife Shaft	1
6	-----	Motor (Give Elec. Spec.)	1
7	V-22660	Plug - Inspection	1
8	S-12241	Bowl	1
9	SC-11-59	Mach. Screw - #12-24 x 1/4" Fil. Hd.	1
10	R-12236	Plate - Bowl Locking	1
11	WS-13-21	Washer - Thrust	1
12	R-12430-137	Key	1
13	V-12245	Retainer - Worm Wheel	1
14	V-12246	Nut - Slotted	1
15	PC-3-39	Cotter Pin - 3/32" x 1-3/8" Lg.	1
16	P-20170	Gasket - Gear Case Cover	1
17	R-20169	Cover - Gear Case	1
18	WS-2-13	Washer	3
19	SC-7-77	Mach. Screw - #10-24 x 1/2" Rd. Hd.	3
20	V-12381	Clamp	4
21	SC-7-77	Mach. Screw - #10-24 x 1/2" Rd. Hd.	3
22	T-12166	Base	1
23	RS-8-10	Rivet - 3/4" Lg. Oval Hd.	2
24	WF-2-10	Wicking - Fluid	1
25	V-12219	Tube - Spacing	1
26	V-12218	Nut - Bearing Retaining	2
27	V-12220	Plate - Grease Retaining	1
28	P-11800-90	Dowel	2
29	P-12237	Wheel - Worm (75T)	1
30	V-12247	Spacer - Bowl Drive Worm	1
31	WS-7-10	Washer	1
32	V-11430	Nut - Special	2
33	BB-5-31	Ball Bearing - ND. #3303	1
34	V-12248	Worm - Bowl Drive (1T)	1
35	R-12430-64	Key	1
36	S-63335-4	Cord and Plug (2 Cond., Under 125 V.)	1
37	S-63335-17	Cord & Plug (2 Cond., 200-250 V.)	1
38	S-63335-30	Cord & Plug (3 Cond., Under 150 V.)	1
39	S-63335-43	Cord & Plug (3 Cond., 200-250 V.)	1
40	BB-5-26	Ball Bearing - N.D. #7503	1
41	M-12249	Spring - Driven Pulley	1
42	M-60281	Drive Pin & Drive Disc Sub-Assy Unit	1
43	P-9614	Ring - Retaining	1
44	P-12294	Belt	1
45	V-12415	Bearing - Pulley Flange (Right)	1
46	V-12253	Pin - Screw	1
47	M-62366	Pulley Flange & Drive Pin (with Disc) Sub-Assy. (Incls Item #42)	1
48	M-12414	Flange - Driven Pulley (Right)	1
49	V-12541	Washer - Bearing Retaining	1
50	P-12254	Shaft - Bowl Drive	1
51	PL-3-10	Plug - 3/4" Dia. Expansion	1
52	P-11800-94	Dowel	2
53	P-62336-1	Loom - 1/4" x 6-1/2" Lg. (Single Ph. & D.C. Only)	2
54	P-62336-19	Loom - 3/8" x 6-1/2" Lg. (3 Phase)	1
55	P-62336-1	Loom - 1/4" x 6-1/2" Lg. (3 Phase)	1
56	FE-2-20	Connector - 1/2" Squeeze	1
57	SC-15-14	Mach. Screw - #6-32 x 3/8" Oval Hd.	2
58	V-12285	Cover - Connection Box	1
59	P-11800-116	Dowel	2
60	V-11876	Plate - Switch Indicator	1
61	V-12313	Screw - Slotted Hex Hd.	4
62	WL-4-12	Lock Washer - 1/2" x .107" x .099"	4
63	SC-7-8	Mach. Screw - #4-40 x 1/4" Rd. Hd.	2
64	P-60283	Cover Plate Sub-Assy Unit	1
65	SC-13-43	Mach. Screw - #10-24 x 3/8" Flat Hd.	4



PL-1411

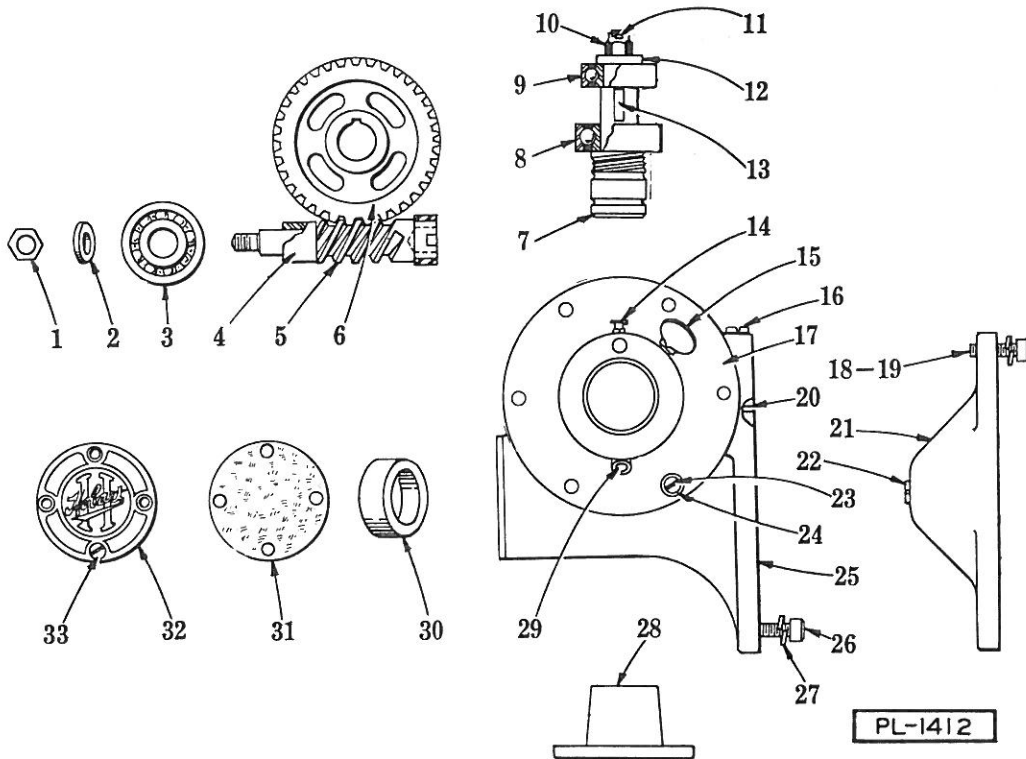
BOWL LID, KNIFE AND SWITCH UNIT

HOBART REPLACEMENT PARTS

BOWL LID, KNIFE AND SWITCH UNIT

ILLUS. PL-1411	PART NUMBER	NAME OF PART	AMT.
1	M-61416-1	Bowl Lid & Hinge Plate Sub-Assy. (Incls. M-66281 & SD-5-17 and Items #5, 56, 57, 58 & 59)	1
2	P-12635-1	Knob - Locking	1
3	PG-3-19	Groov Pin - Type #1, 3/16" x 7/8" Lg.	1
4	V-12264	Spacer - Lock Bolt	1
5	M-12262	Bushing - Bowl Lid	1
6	V-12263	Spring - Lock Bolt	1
7	M-12275	Bolt - Lock	1
8	P-12270	Retainer - Comb	1
9	M-12269	Control Shaft - Lock Rod	1
10	P-11800-149	Dowel	1
11	SC-22-33	Mach. Screw - 1/4"-20 x 3/4" Flat Hd.	1
12	V-12272	Shim	4
13	R-12268	Support - Comb	As reqd
14	M-60282	Lock Rod Shift Arm & Pivot Sub-Assy Unit	1
15	SC-15-66	Mach. Screw - 1/4"-20 x 3/4" Oval Hd.	4
16	V-7009	Spring	1
17	BA-2-18	Ball - 3/8" Dia.	1
18	P-12258	Arm - Lock Rod	1
19	PT-3-40	Taper Pin - #2 x 1" Long	1
20	M-12259	Rod - Lock	1
21	M-12293	Knob - Knife Retaining	1
22	V-6261	Locking Collar - Knife Ret. Bushing	1
23	V-6262	Collar - Knife Ret. Bushing	1
24	P-7157	Bushing - Knife Retaining	1
25	P-11800-92	Dowel	1
26	M-12282	Disc - Locking	1
27	PG-3-19	Groov Pin - Type #1, 3/16" x 7/8" Long	1
28	M-12281	Shaft - Switch Shifter	1
29	PG-3-19	Groov Pin - Type #1, 3/16" x 7/8" Long	1
30	M-12283	Arm - Shifter	1
31	V-10741	Collar - Retaining	1
32	SC-47-8	Set Screw - 1/4"-20 x 1/4" Soc. Hds. Cup Pt.	1
33	M-63739	Groov Pin - Type #1, 3/16" x 7/8" Long	1
34	M-12280	Handle - Switch Shifter	1
35	V-12292	Link - Switch Connecting	2
36	V-12284	Pin	1
37	PC-3-23	Cotter Pin - 1/16" x 1/2" Long	1
38	WS-3-19	Washer	1
39	PC-3-23	Cotter Pin - 1/16" x 1/2" Long	1
40	V-12284	Pin	1
41	PC-3-23	Cotter Pin - 1/16" x 1/2" Long	2
42	M-12286	Pivot - Link	1
43	WS-3-19	Washer	2
44	V-7604	Spring	1
45	WL-5-12	Lock Washer - #8 x .047" x .031"	4
46	SC-7-68	Mach. Screw - #8-32 x 5/8" Rd. Hd.	2
47	NS-9-12	Mach. Nut - #8-32 Hex	2
48	M-12290	Switch	1
49	SC-7-77	Mach. Screw - #10-24 x 1/2" Rd. Hd.	4
50	WL-3-22	Lock Washer - #10 x .055" x .040"	4
51	V-12291	Insulator - Switch	1
52	M-17908	Knife - Rotary (Leader)	1
53	M-12135	Plate - Cover	1
54	SC-15-18	Mach. Screw - #8-32 x 3/8" Oval Hd.	4
55	P-23680	Balance - Knife (For Single Knife Only)	1
56	V-12387	Shim	As reqd
57	M-23754	Plate - Lid Hinge	2
58	P-11800-150	Dowel	4
59	SC-23-19	Mach. Screw - 1/4"-20 x 3/4" Oval Hd.	6
60	SC-23-26	Mach. Screw - 1/4"-20 x 7/8" Oval Hd.	2
61	V-12347	Washer - Special	2
62	P-12427	Scraper - Bowl	1
63	M-17909	Knife - Rotary (Follower) (Also used as Single Knife)	1
64	M-12261	Comb	1
65	M-23681	Comb (For Single Knife Only)	1
	M-63200-1	Bowl Lid, Locking Knob and Hinge Plate Sub Assy. (Incls. Items #1, 2, 3, 4, 5, 6, 7, 56, 57, 58 & 59)	1
	M-66281	Plate - Caution (Not Shown)	1
	SD-5-17	Drive Screw - #6 x 1/4" Rd. Hd., Type "U" (Retains M-66281) (not shown)	2

HOBART REPLACEMENT PARTS



ATTACHMENT DRIVE UNIT

ILLUS. PL-1412	PART NUMBER	NAME OF PART	AMT.
1	V-11430	Nut - Special	2
2	WS-7-10	Washer	1
3	BB-5-21	Ball Bearing - N. D. #3302	1
4	V-12256	Spacer - Worm Bearing	1
5	M-62600	Attachment Hub Worm & Sleeve Sub-Assy.	1
6	M-12240	Gear - Attachment Hub (30T)	1
7	P-12129	Shaft - Attachment Drive	1
8	BB-5-41	Ball Bearing - N.D. #7504	1
9	BB-5-24	Ball Bearing - N.D. #3203	1
10	NS-20-8	Castle Nut - 3/8"-24	1
11	PC-3-34	Cotter Pin - 3/32" x 3/4" Long	1
12	WS-6-18	Washer	1
13	R-12430-47	Key	1
14	OG-3-21	Oiler - 1/8" Pipe Thd.	1
15	M-4202-2	Thumb Screw	1
16	V-22660	Plug - Inspection	1
17	R-12225	Hub - Attachment	1
*18	SC-40-8	Cap Screw - 1/4"-20 x 1" Soc. Fil. Hd.	4
*19	WL-3-36	Lock Washer - 1/4" x .107" x .047"	4
20	P-11800-91	Dowel	1
*21	R-12136	Cover - Blind End	1
*22	V-22660	Plug - Inspection	1
23	SC-38-2	Cap Screw - 1/4"-20 x 5/8" Fil. Hd.	6
24	WL-3-35	Lock Washer - 1/4" x .047" x .078"	6
25	S-12175	Gear Case - Attachment	1
26	SC-40-9	Cap Screw - 1/4"-20 x 1-1/4" Soc. Fil. Hd.	4
27	WL-3-36	Lock Washer - 1/4" x .107 x .047"	4
28	M-2448	Cover - Attachment Hub	1
29	V-12226	Drain - Attachment Hub	1
30	V-12255	Sleeve - Spacing	1
31	V-24464	Gasket - Cap	1
32	P-12062	Cap - Cover	1
33	SC-15-20	Mach. Screw - #8-32 x 3/8" Oval Hd.	4
	M-63293	Attachment Drive Sub-Assy. (Incls. items #1, 2, 3, 4, 5, 6, 7, 8, 9, 10, 11, 12, 13, 14, 15, 16, 17, 20, 23, 24, 25, 26, 27, 28, 29, 30, 31, 32 & 33..)	1

* For Machines Without Gear Attachment ONLY.