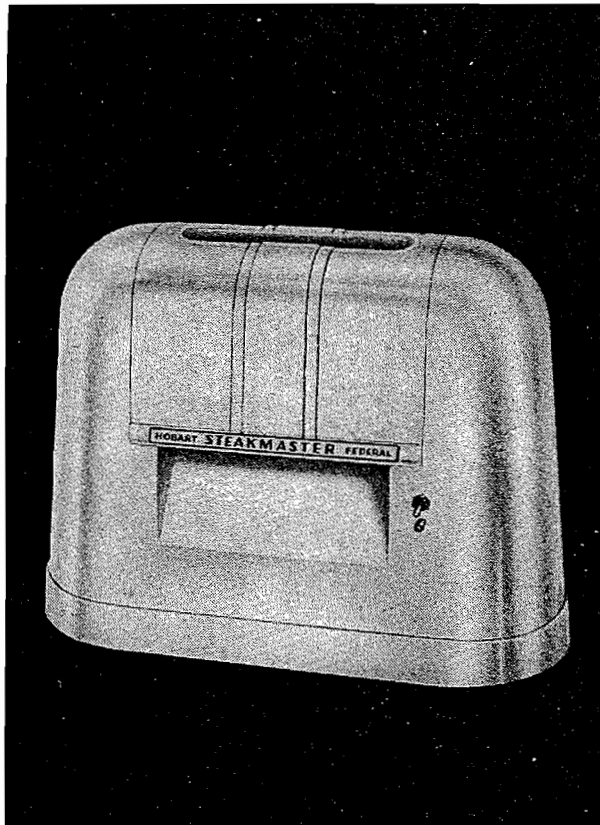


# INSTRUCTION MANUAL

*with Catalog of Replacement Parts*



## Model 400 Steakmaster\*

(Steakmaster\* tenderizers are manufactured by  
Hobart-Federal Engineering Corp., a Hobart subsidiary.)

**SPECIFICATION 400-38**

**THE HOBART MANUFACTURING COMPANY**

*The World's Largest Manufacturer of Food, Kitchen, Bakery and Dishwashing Machines*

**TROY, OHIO, U. S. A.**

\*Reg. U. S. Pat. Off.

HOBART REPLACEMENT PARTS

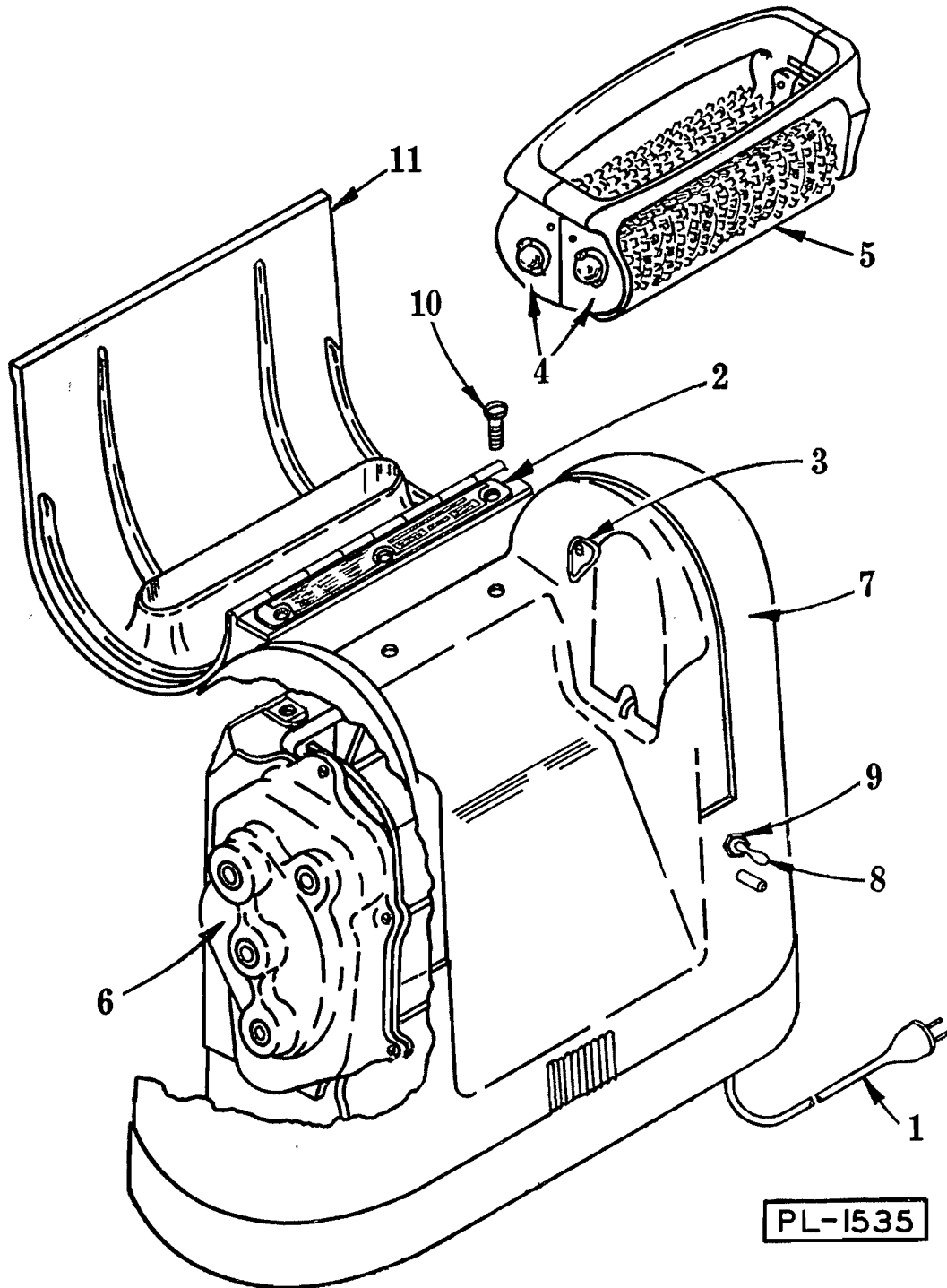


Fig. 1

## Instructions for Operation and Care of Model 400 Steakmaster

**CONNECTIONS:** Each machine is furnished with cord and plug (1)(Fig. 1). Before plugging into socket, be sure the line current available is the same as specified on the machine name plate (2).

**OPERATION:** Only boneless meats should be used. Various combinations with different kinds of meats may be blended together. To do this, feed the different meats through separately to tenderize them, then feed through together creating a firmly knit steak. Large slices should be under 3/4" thick. Choice or tender cuts of meat should be run through two to four times at different angles. Less tender cuts should be run through from three to six times as desired, to increase tenderness. Pull out excess sinews to save operations and also increase tenderness.

**CAUTION:** Observe all safety rules with this machine that would apply to any razor-edged tool.

**CLEANING:** Release the lock (3)(Fig. 1), grasp both handles in one hand and lift out the entire roller (tenderizer) unit (4). To separate blade rollers, grasp one hanger handle in each hand and swing apart. Next, remove the strippers from the roller assemblies. To do this, push stripper in direction of arrow (1) Fig. 2 until stripper pivot screw (2) clears hanger. Swing stripper in direction of arrow (3). Remove by pulling in direction of arrow (4). Remove meat from stripper by hand. Flush strippers and rollers with hot running water. A fiber brush or whisk broom will help loosen meat particles. Use the hanger handle to hold the roller assembly, thus avoiding any contact with the sharpened blades. If parts are washed regularly before drying, it is a quick, easy job. Should the meat or food be allowed to dry on the parts, they will require a few minutes of soaking in water. To replace the roller assemblies (4) Fig. 1, reassemble the strippers (5), then the front and back roller assemblies. Replace the complete unit into machine, engaging the drive shafts, and lock into place.

**ROLLER ASSEMBLY:** Due to the close relationship between the front and back rollers, any replacement of more than six blades or six spacers or a combination of the two, should NOT be

serviced in the field. Always re-assemble blades and spacers in their same order as originally assembled.

**BLADE SHARPENING:** The cutting edges of the blades may be quickly re-sharpened as follows:

1. Remove lift-out unit and disassemble strippers.
2. Place back hanger unit into proper position of machine and hold file between revolving blades until blades are sharp.
3. Remove back hanger unit and place front hanger unit into machine. Sharpen revolving blades as in paragraph 2.

**LUBRICATION:** This machine is gear driven and has special oil impregnated bronze bearings throughout. The gears, sealed in a cast transmission case (6)(Fig. 1), are grease packed with special grease at the factory. Once a year, have a Hobart Service man check this grease and replenish with special grease as required. The motor is oil lubricated with large capacity oil reservoirs, and should be checked annually. To properly lubricate the motor, the outside housing or body (7)(Fig. 1), should be removed. To remove the body, unlock and lift out the roller or tenderizer Unit (4). Then, disassemble the switch (8) from the body by removing the outside retaining nut (9). Next, remove the three screws (10) that retain the cover (11). Lift off the body. The motor is then exposed for easy lubrication and inspection.

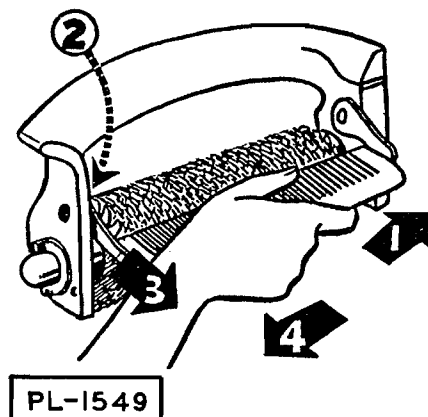
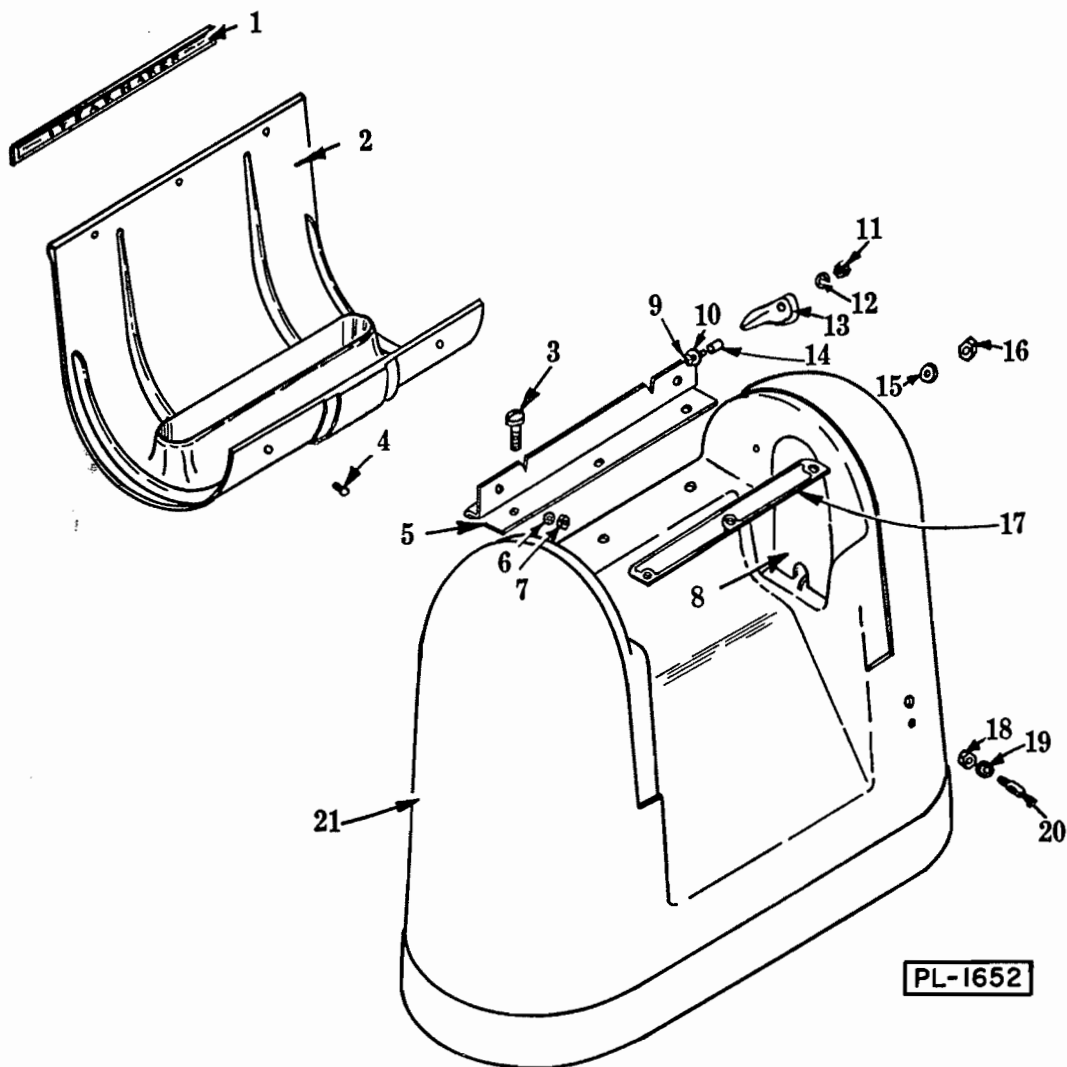


Fig. 2

# HOBART REPLACEMENT PARTS

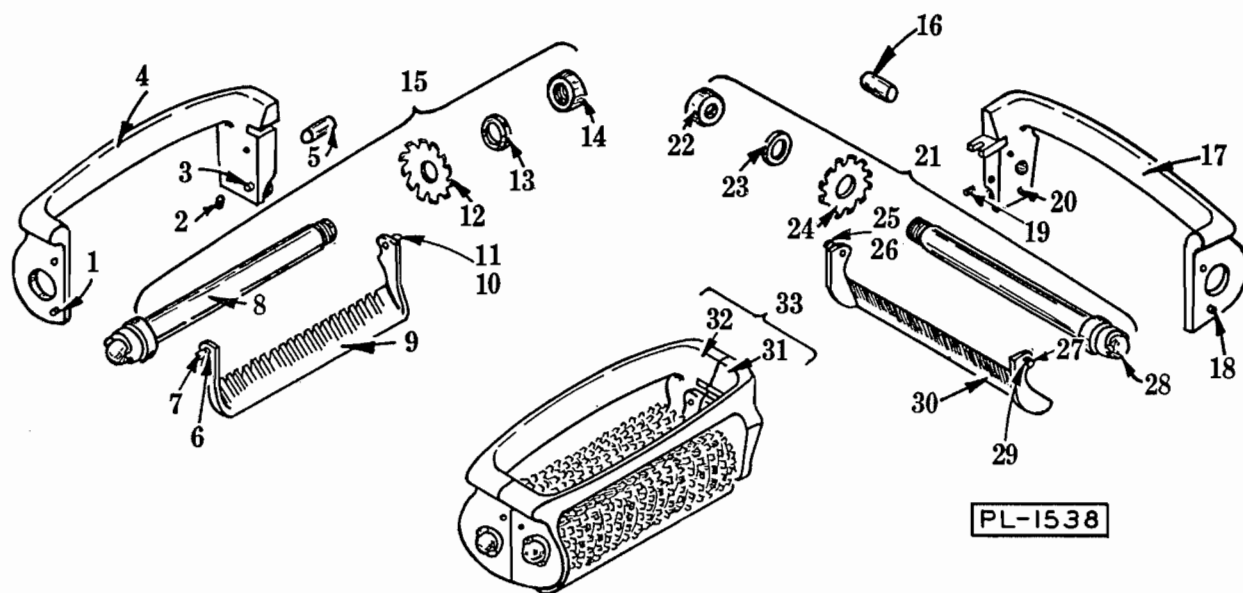


PL-1652

## BODY UNIT

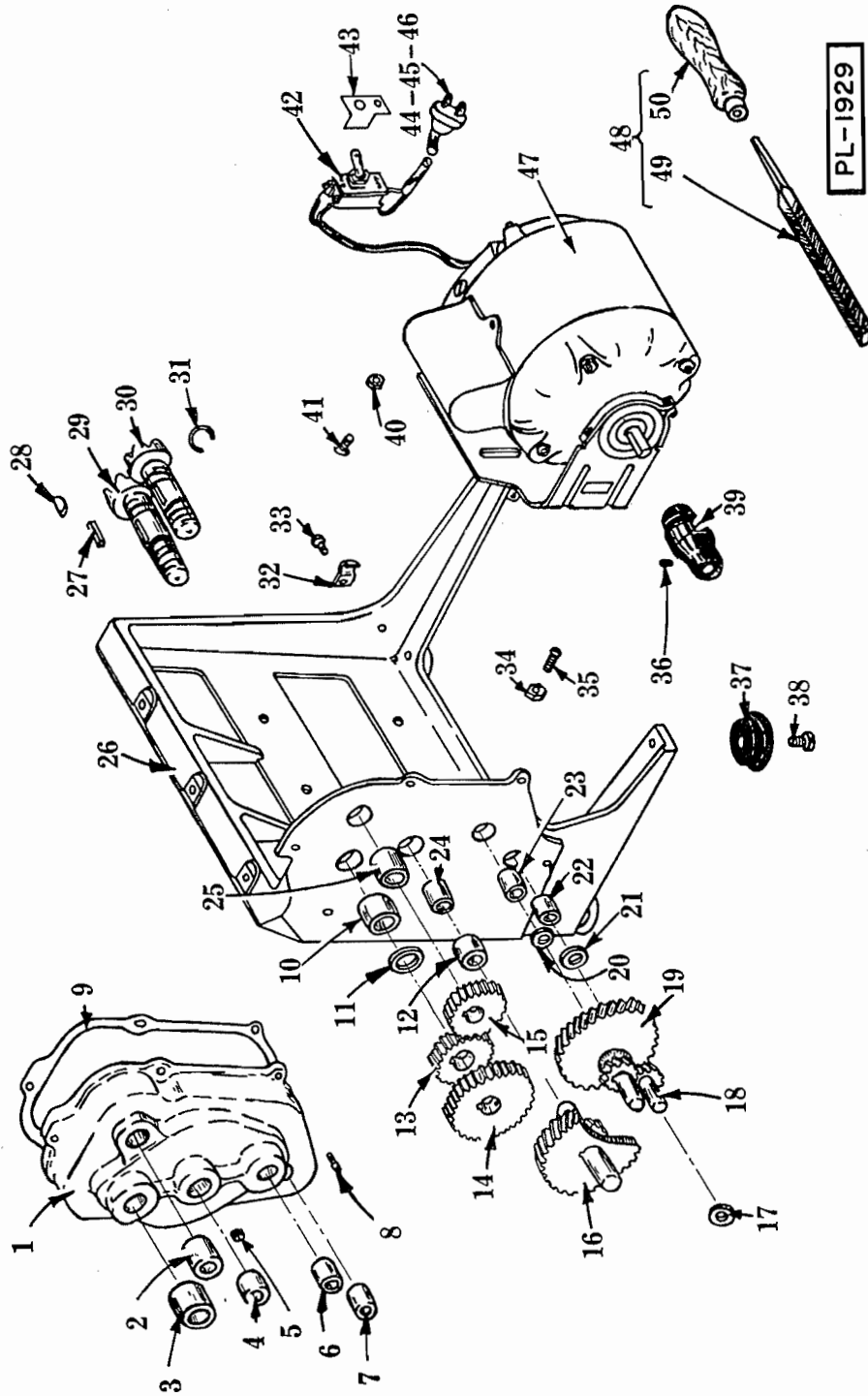
ILLUS. PL-1652	PART No.	NAME OF PART	AMT.
1	391	Plate - Name .....	1
2	224A	Cover Assy. (Incls. Items #1) .....	1
3	SC-38-52	Cap Screw - 5/16"-18 x 1-1/4" Fil. Hd. ....	3
4	SC-18-4	Mach. Screw - #10-24 x 1/2" Pan Hd. ....	2
5	258	Hinge .....	1
6	WL-11-6	Lock Washer - #10 Int. Shakeproof .....	2
7	NS-9-25	Nut - #10-24 Hex Mach. ....	2
8	263A	End Plate Assembly .....	1
9	299	Screw - Hanger Lock .....	1
10	WS-19-2	Washer .....	1
11	NS-9-25	Nut - #10-24 Hex Mach. ....	1
12	372	Lock Washer .....	1
13	414	Lock Hanger .....	1
14	546	Ferrule - Hanger Lock .....	1
15	WS-2-20	Washer .....	2
16	NS-9-25	Nut - #10-24 Hex Mach. ....	2
17	256	Plate - Serial .....	1
18	NS-9-25	Nut - #10-24 Hex Mach. ....	1
19	372	Lock Washer .....	1
20	127-1	Guard - Switch .....	1
21	222A	Body Assembly (Incls. Items #8, 9, 10, 11, 12, 13, 14, 15, 16, 18, 19, 20, and #43 on page 6) .....	1

## HOBART REPLACEMENT PARTS



### LIFT-OUT UNIT

ILLUS. PL-1538	PART No.	NAME OF PART	AMT.
1	517-1	Stop Screw - Left Stripper	1
2	559	Set Screw - Special	1
3	517-2	Stop Screw - Right Stripper	1
4	393-A	Back Hanger Assy.	1
5	251	Bearing - Plug	1
6	372	Lock Washer	1
7	406	Pivot - Left Stripper	1
8	201A	Back Blade Shaft Assy.	1
9	439A	Back Stripper Assembly (Incls. Items #6, 7, 10 & 11)	1
10	372	Lock Washer	1
11	405	Pivot - Right Stripper	1
12	101-1	Blade	41
13	574	Spacer	40
14	206	Lock Nut - Back	1
15	202A-1	Back Roller Unit Assy. (Incls. Items #8, 12, 13, and 14)	1
16	251	Bearing - Plug	1
17	392A	Front Hanger Assembly	1
18	517-1	Stop Screw - Left Stripper	1
19	559	Set Screw - Special	1
20	517-2	Stop Screw Right Stripper	1
21	199A-1	Front Roller Unit Assy. (Incls. Items #22, 23, 24, and 28)	1
22	205	Nut - Front Lock	1
23	574	Spacer	40
24	101-1	Blade	41
25	405	Pivot - Right Stripper	1
26	372	Lock Washer	1
27	406	Pivot - Left Stripper	1
28	198A	Front Blade Shaft Assy.	1
29	372	Lock Washer	1
30	438A	Front Stripper Assy. (Incls. Items #25, 26, 27, and 29)	1
31	394A	Front Hanger Unit (Incls. Items #16, 17, 18, 19, 20, 21, and 30)	1
32	395A	Back Hanger Unit (Incls. Items #1, 2, 3, 4, 5, 9 and 15)	1
33	396A	Lift-Out Unit Assy. (Incls. Items #31 and 32)	1



CHASSIS AND DRIVE UNIT

## HOBART REPLACEMENT PARTS

### CHASSIS AND DRIVE UNIT

ILLUS. PL-1929	PART NO.	NAME OF PART	AMT
1	451A	Gear Box Assy. (Incls. Items #2, 3, 4, 6 & 7) -----	1
2	254-1	Bearing - Oilite (3/4" x 1" x 23/32") -----	1
3	254-1	Bearing - Oilite (3/4" x 1" x 23/32") -----	1
4	253	Bearing - Oilite (5/8" x 7/8" x 3/4") -----	1
5	FP-28-42	Plug - 1/8" Pipe -----	1
6	252	Bearing - Oilite (1/2" x 3/4" x 3/4") -----	1
7	252	Bearing - Oilite (1/2" x 3/4" x 3/4") -----	1
8	SC-11-87	Mach. Screw - 1/4"-20 x 5/8" Fil. Hd. -----	6
9	432	Gasket - Gear Box -----	1
10	254-1	Bearing - Oilite (3/4" x 1" x 23/32") -----	1
11	153	Washer - Fiber -----	1
12	236-1	Spacer - Gear -----	1
13	243-1	Gear (32T) -----	1
14	242-1	Gear - (48T) -----	1
15	243-1	Gear - (32T) -----	1
16	431A	No. 2 Reduction Shaft Assy -----	1
17	235-1	Washer - Thrust -----	1
18	429A	Drive Shaft Assy. -----	1
19	430A	No. 1 Reduction Shaft Assy. -----	1
20	235-1	Washer - Thrust -----	2
21	235-1	Washer - Thrust -----	1
22	252	Bearing - Oilite (1/2" x 3/4" x 3/4") -----	1
23	252	Bearing - Oilite (1/2" x 3/4" x 3/4") -----	1
24	253	Bearing - Oilite (5/8" x 7/8" x 3/4") -----	1
25	254-1	Bearing - Oilite (3/4" x 1" x 23/32") -----	1
26	452A	Chassis Assembly (Incls. Items #10, 22, 23, 24 & 25) -----	1
27	275	Key (1/8" x 1/8" x 7/8") -----	1
28	KW-3-3	Woodruff Key - #404 -----	1
29	427	Stub Shaft - Back -----	1
30	428	Stub Shaft - Front -----	1
31	282	Retaining Ring -----	2
32	220	Clip - Cord -----	1
33	SC-9-41	Mach. Screw - 1/4"-20 x 3/8" Rd. Hd. -----	1
34	NS-13-2	Full Nut - 1/4"-20 Hex Finish. -----	1
35	SC-9-43	Mach. Screw - 1/4"-20 x 1" Rd. Hd. -----	1
36	559	Set Screw - Special -----	2
37	271	Foot - Rubber -----	4
38	SC-11-87	Mach. Screw - 1/4"-20 x 5/8" Fil. Hd. -----	4
39	272	Coupling - Flexible -----	1
40	NS-13-14	Full Nut - 5/16"-18 Hex Finish. -----	1
41	273-1	Bolt - Motor Mounting -----	4
42	161	Switch (Give Elec. Spec.) -----	1
43	286	Lock - Switch -----	1
44	548 A	Cord & Plug, 2 Conductor (2 Prong Plug) (General purpose under 125V) --	1
45	550 A	Cord & Plug, 3 Conductor (3 Prong Plug)(Under 150 V.) -----	1
46	551 A	Cord & Plug, 3 Conductor (3 Prong Plug) (200-250 V.) -----	1
47	415	Motor (Give Elec. Spec.) -----	1
48	278 A-1	File and Handle Assy. (Incls. Items #49 & 50) -----	1
49	184-1	File - Web Saw (6") -----	1
50	185	Handle - File -----	1