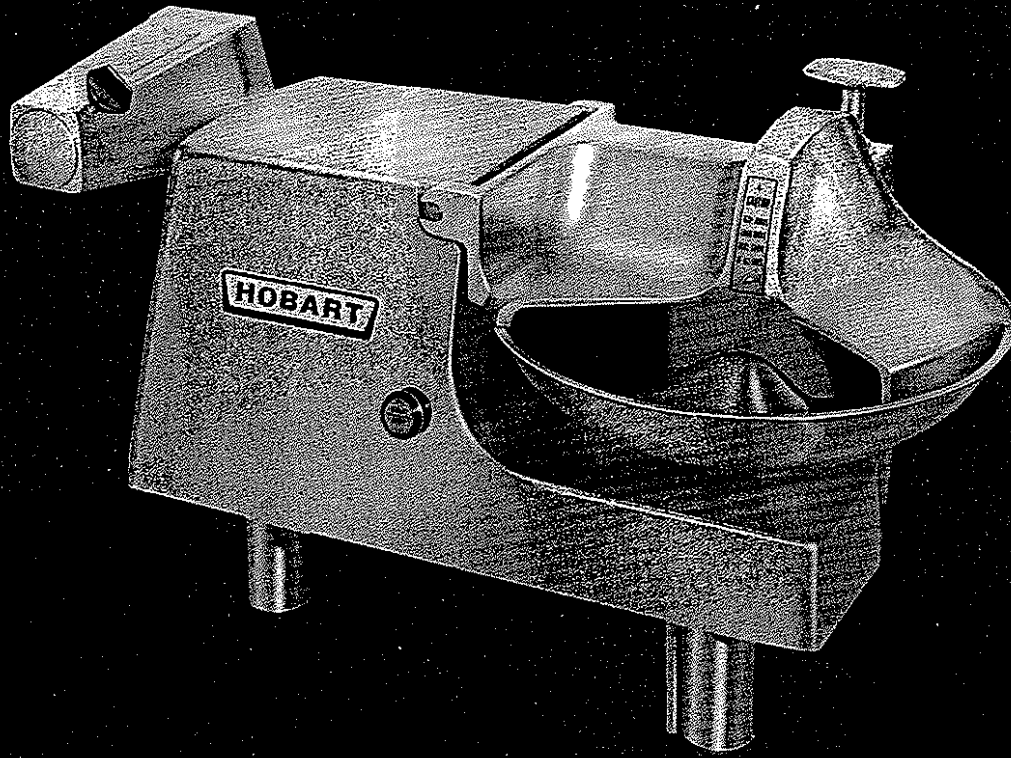


HOBART

FOOD EQUIPMENT

84145
FOOD CUTTER



84145 FOOD CUTTER

14" FOOD CUTTER

The Hobart Food Cutter is the most versatile machine possible for kitchen, food store or bakery use. Salads and bakery conversions in seconds—chopped steaks in minutes—a machine that reflects advanced engineering.

The Hobart 14-inch food cutter is finished in attractive burnished aluminum for easy cleanup and neat appearance.

Equipped with a stainless steel bowl, aluminum bowl cover, "Closed End" cutlery stainless steel

knives, and 3-inch stainless steel legs (NSF approved) for the ultimate in sanitation.

A pull-to-start, push-to-stop switch is located on the front of the machine for operator convenience.

The Hobart No. 12 Attachment Hub provides for easy addition of Hobart attachments. A swing-out Extension Foot provides additional stability when the attachments are used. Available without attachment hub as Model 8145.

Specifications, Details and Dimensions on Reverse Side.

WORLD HEADQUARTERS, TROY, OHIO 45374

84145 FOOD CUTTER

SPECIFICATIONS

- Listed by Underwriters Laboratories Inc and by National Sanitation Foundation

MOTOR: ½ H.P., Hobart-built, fan cooled, permanently lubricated ball bearings, and totally enclosed within the machine. Single-phase is capacitor-start, induction-run. Three-phase is induction run.

ELECTRICAL: Available in 115/60/1, 230/60/1, 200/60/3, 230/60/3 and 460/60/3—UL Listed. Also available in 100/50/1, 115/50/1, 220/50/1, 240/50/1, 220/50/3, 240/50/3, 380/50/3 and 415/50/3—Not Submitted for UL Listing.

SWITCH: Single-phase is double-pole single throw. Three-phase is three-pole single throw. The bowl cover and switch are interlocked so that the machine cannot be turned on until the bowl cover is locked in place, nor can the bowl cover be raised with the switch in the "ON" position.

CORD AND PLUG: 6 foot cord with plug per latest NEMA config-

As continued product improvement is a policy of Hobart, specifications are subject to change without notice.

uration. Export models are supplied with I.E.C. cord, without plug.

BOWL: Rotates at 22 RPM. 14¹⁵/₁₆" inside diameter. Formed from a single sheet of stainless steel and easily removed for cleaning.

KNIVES: Rotate at 1725 RPM. The blades (made of special cutlery stainless steel) are secured to a hub as a unit which may be removed from the knife shaft without change of knife clearance adjustment.

BASE: One-piece burnished aluminum casting with steel bottom cover (total enclosure).

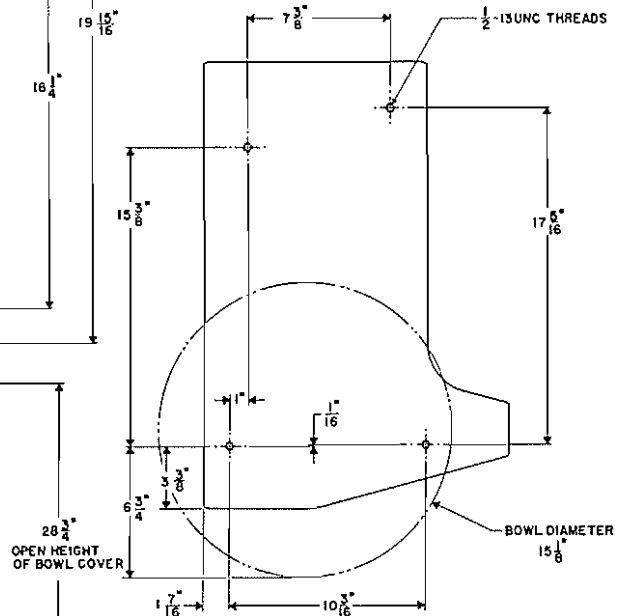
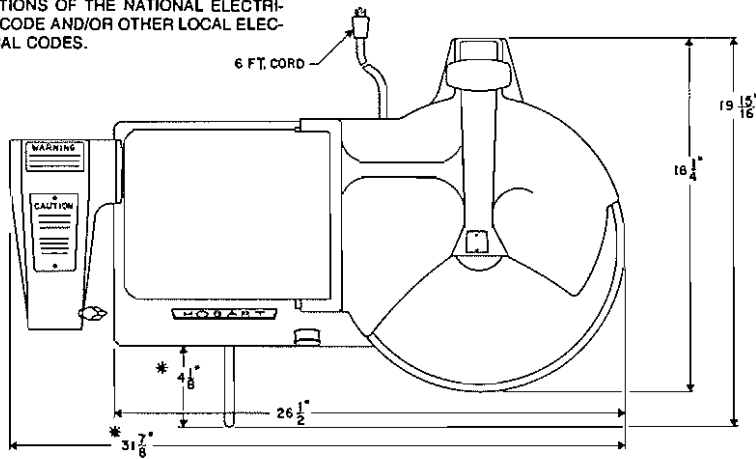
ATTACHMENT HUB: Speed - 209 RPM. Accommodates all Hobart No. 12 attachments (9" Vegetable Slicer, Dicer, Chopper End and Speed Drive). See Form F-7573 Attachments specification sheet for proper application information.

WEIGHT: Net - 112 lbs. Shipping - 127 lbs.

DETAILS AND DIMENSIONS

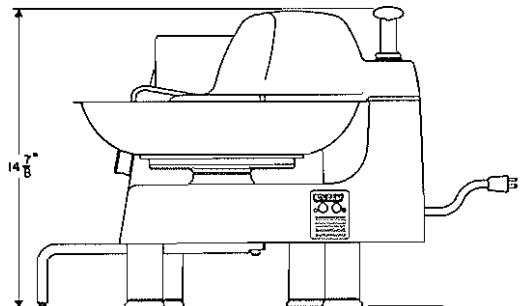
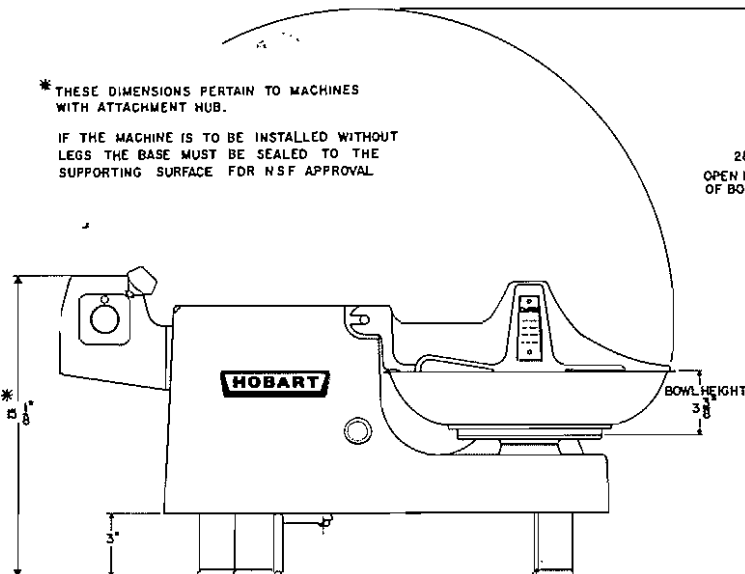
WARNING

ELECTRICAL AND GROUNDING CONNECTIONS MUST COMPLY WITH APPLICABLE PORTIONS OF THE NATIONAL ELECTRICAL CODE AND/OR OTHER LOCAL ELECTRICAL CODES.



* THESE DIMENSIONS PERTAIN TO MACHINES WITH ATTACHMENT HUB.

IF THE MACHINE IS TO BE INSTALLED WITHOUT LEGS THE BASE MUST BE SEALED TO THE SUPPORTING SURFACE FOR NSF APPROVAL



E-117147

