



Food Equipment Group

APPLIES TO
ROLL-IN UNITS
VOL. 1 NO. 0026
12/15/2016

TRAULSEN TECHNICAL BULLETIN

PRODUCT SERVICE DEPARTMENT

FORT WORTH, TX 76106

ROLL-IN MODEL INSTALLATION INSTRUCTIONS

Introduction:

This technical bulletin is intended to aid the field in installing Traulsen roll-in model units. This technical bulletin may not cover all situations that may arise in the field and final diagnosis of field based equipment is the sole responsibility of the technician contracted to perform any work required.

ROLL-IN MODEL INSTALLATION

Confirm that the correct power supply is available to the cabinet per the manufactures requirements as listed on the cabinet data tag before cabinet installation. The area in which your cabinet is to be installed should be chosen carefully to insure the best performance. The installation surface should be level and provide good area circulation. After the cabinet is set in place, and leveled, an NSF approved sealant (Dow Corning Silastic RTX #732 for example) should be used around the perimeter of the base to secure the unit to the floor and prevent the ingress of vermin and water under the unit. After properly sealing the unit to the floor, the enclosed ramp should then be installed using the instructions below.

SEALING YOUR CABINET TO THE FLOOR

Properly Position Cabinet – For your product’s best performance, proper air circulation is key. For refrigerators, allow one inch between the wall and rear of the cabinet. For freezers, allow 3 inches. Properly level cabinet – Using a level placed in all four interior corners, level cabinet side to side and front to back and square at all four corners. Draw an outline of the cabinet’s base on the floor as a reference for sealing. Beginning with the front of the cabinet, raise and block the base. Using an NSF approved sealant (Dow Corning Silastic RTV #732 for example), apply a bead of sealant at least half inch wide on the floor inside the outline previously drawn. The bead must be heavy enough to seal the entire cabinet surface without gaps or spaces when it is lowered down on the sealant. Repeat this procedure for the sides and back of the cabinet. Before continuing, examine the cabinet’s seal carefully to ensure that there are no gaps allowing the ingress of vermin or water around the entire perimeter.

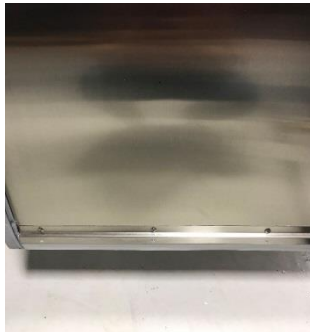


ROLL-IN & ROLL-THRU RAMP INSTALLATION



A stainless steel threshold ramp(s) is included to facilitate rolling in racks. It is shipped wrapped in brown paper and secured to the rack guides inside the cabinet. To secure in place, remove the two thumb screws in the breaker strip near the bottom door opening. Place the ramp(s) on top of the loosened thumb screws and secure tabs on each end to the breaker strips with the thumb screws previously removed. After installing the ramp(s), it too should be sealed to the floor.

SOLID DOOR SWEEP ADJUSTMENT



Locate the attachment screws on the door sweep at the base of the unit. Loosen the attachment screws and move the sweep up or down and side to side as needed. If properly adjusted, the sweep should make contact with the ramp when the door is closing. Confirm the sweep has been properly situated by opening the door of the unit about 3-4 inches and allowing the door to close naturally. You may wish to perform this action more than once before re-securing the sweep bracket. Once satisfied that the sweep is properly adjusted, tighten slotted screws.

GLASS DOOR SWEEPS



All glass door sweeps need to have the doors adjusted and closed when adjusting the sweep. It is best to be inside the unit when adjusting the sweep. This sweep does not have adjustable holes. First time placement of the sweep is very critical.

DOOR GASKET ADJUSTMENT



Door gaskets are adjusted after door sweeps have been adjusted and secured. Loosen the retaining screw holding the door gasket in place normally located about 6 inches up from bottom of the door in the interior fold of gasket. Raise the bottom gasket up level to interior door sweep blade or shorter blade on door sweep. Secure the retaining screw. A new hole may need to be made if the gasket is raised substantially.

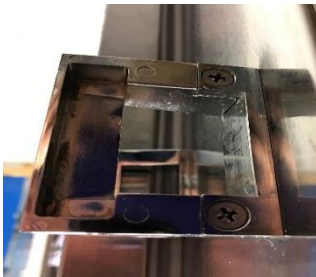


DOOR/HINGE ADJUSTMENTS



All doors must be properly adjusted to insure they close properly. The door should close freely over the ramp. To remove the door you will need to remove the safety screw in the bottom of all hinges. The door should lift off the cabinet at this point. There are three screws holding the hinge bracket to the cabinet. Loosen the three screws but do not remove them. You can now adjust the hinge up or down and side to side. Tighten the three screws and replace the door and safety screws. Open and close the door several times to make sure it closes freely.

LOCKKEEPER ADJUSTMENT



To adjust the lockkeeper you will need to remove the two screws holding the lockkeeper. Loosen the two screws in the bracket mounted on the cabinet but do not remove them. The bracket can be move slightly from side to side. Tighten the screws in the bracket and replace the lockkeeper. Make sure the lock bolt catches the lockkeeper so the door can be locked.

Contact Traulsen Technical Service:

If further assistance is needed feel free to contact Traulsen Technical Service at 800-825-8220 between the hours of 7:30am – 11:30am CST & 12:30pm – 4:30pm CST.