

VULCAN

Item # _____

C.S.I. Section 11420

MODEL 2T2036D

TWO 24 QUART $\frac{2}{3}$ JACKETED TILTING
DIRECT STEAM KETTLES ON CABINET BASE



ANSI/NSF Standard #4

SPECIFICATIONS:

Two 24 quart $\frac{2}{3}$ jacketed tilting steam kettles mounted on a 36" wide cabinet base, Vulcan-Hart Model No. 2T2036D. Steam jacketed kettles mounted on 28" high base cabinet with front full height doors, slip-off stainless steel side and aluminized rear panel with 6" adjustable legs with flanged feet for anchoring. Fully welded hemispheric bottom kettle with type 304 stainless steel jacket and type 316 stainless steel liner. Jacket tested to 50 psi (3.4 kg/cm²). Requires a total of 42 lbs./hr. of 5-50 psi steam flow, 21 lbs./hr. of 5-50 psi steam flow per kettle. Steam control valve on right trunnion leg. 12" single temperature deck mounted faucet.

Exterior dimensions:

Cabinet: 36" w x 33" d x 28" h on 6" adjustable legs. Overall height to the lip of the kettles - 47 $\frac{1}{2}$ ", to the top of the handle - 56 $\frac{1}{4}$ ".

Classified by U L to NSF Std. #4. Meets ASME code.

STANDARD FEATURES

- Two $\frac{2}{3}$ jacketed tilting steam kettles, 24 quart capacity each.
- Steam jacketed kettles mounted on 28" high base cabinet with front full height doors, slip-off stainless steel side and aluminized rear panel with 6" adjustable legs with flanged feet for anchoring.
- Fully welded hemispheric bottom kettle with type 304 stainless steel jacket and type 316 stainless steel liner. Jacket tested to 50 psi (3.4 kg/cm²). Requires 21 lbs./hr. of steam flow at 5-50 psi per kettle.
- Steam control valve on right trunnion leg.
- 12" single temperature deck mounted faucet.
- One year limited parts and labor warranty.

OPTIONS

- Correction package.
 - Cabinet door with hasp (lock by others).
 - Security type tamper resistant fasteners.
- Tilting kettle strainer (one) (two).
- 12" dual temperature faucet.
- Mount and interconnect kettle with boiler base at factory. Includes steam supply piping. Shipped on one skid.
- Second year extended limited parts and labor warranty.

ACCESSORIES

- Stainless steel back panel.
- Lift-off cover (one) (two).
- Contour measuring strip.
- Single perforated stainless steel basket (one) (two).
- Ball float trap.
- Pressure reducing valve.

VULCANA2780
IS 0901
Vulcan-Hart Co.**MODEL: 2T2036D Two 24 Quart $\frac{2}{3}$ Jacketed Tilting Kettles On Cabinet Base****VULCAN-HART COMPANY, P.O. BOX 696, LOUISVILLE, KY 40201, TEL. 1-800-814-2028****502-778-2791 QUOTE & ORDER FAX: 1-800-444-0602**



MODEL 2T2036D

TWO 24 QUART $\frac{2}{3}$ JACKETED TILTING
DIRECT STEAM KETTLES ON CABINET BASE

DIRECT STEAM DATA:

Steam supply to the kettle must:

1. Maintain a steady 13 psi flow under operating conditions.
2. Have a minimum flow rate of 42 lbs. (1.2 BHP)/hr., dry steam.
3. Be adequately trapped to provide dry steam. (See ball float trap.)

EQUIPMENT CLEARANCE:

Rear: 2" Right: 0" Left: 0"

CAPACITIES (in 4 oz. servings):

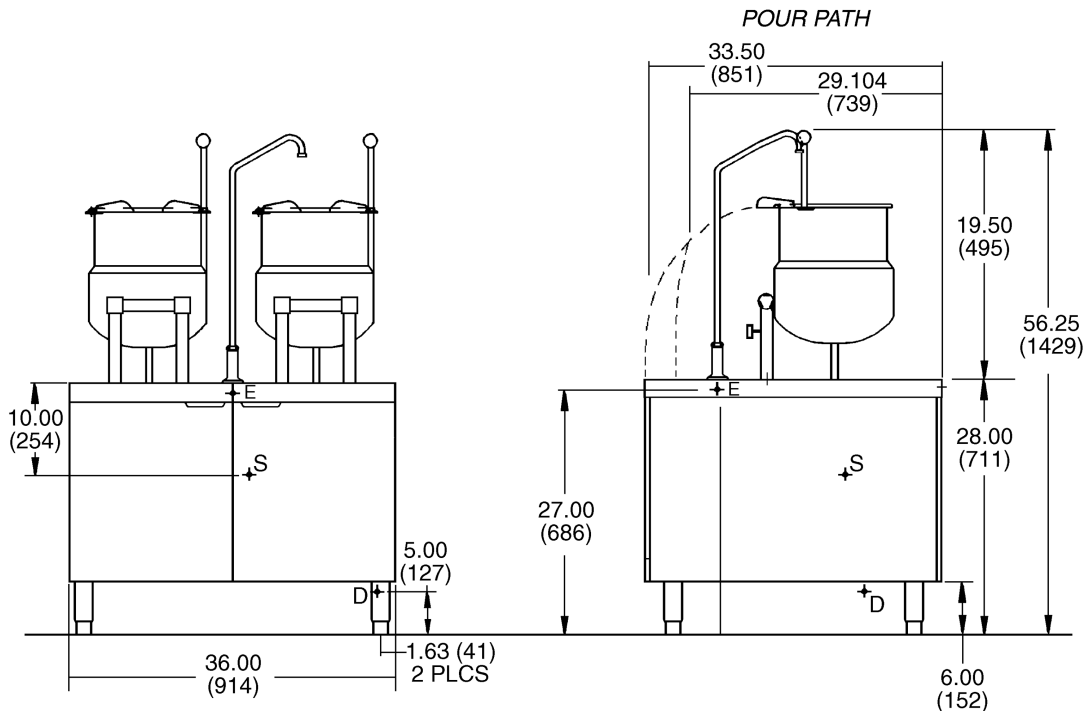
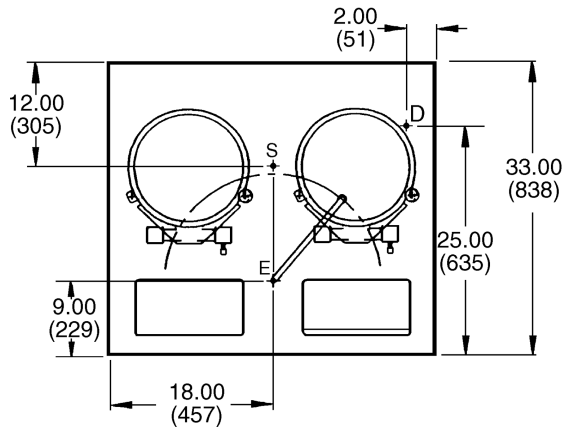
24 quarts / 6 gallons / 22.5 liters - 192 servings.

SERVICE CONNECTIONS:

- A Steam Supply Connection: $\frac{3}{4}$ ".
- B Drain: Condenser box, compartment and boiler, $1\frac{1}{4}$ " NPT. (Provide an open air gap type drain within 12" of condenser box and for best results at a distance so that steam vapors will not enter the steamer from underneath the control area. Do not connect solidly to any drain connection.)
- C Water Supply Connection for Kettle Filler Faucet: $\frac{1}{4}$ " NPT.

NOTE:

- Dimensions which locate the above connections have a tolerance of + or -3" (+ or -75 mm).
- Installation of backflow preventers, vacuum breakers and other specific code requirements is the responsibility of the owner and installer. It is the responsibility of the owner and installer to comply with local codes.
- Plastic drains are not recommended due to inherent limited temperatures of the plastic. Boiler purge temperatures may exceed 180°F. The installer may be required to provide means to reduce boiler purge water temperature to be that of the condensate temperature of 140°F or less.
- This appliance is manufactured for commercial installation only and is not intended for home use.



NOTE: In line with its policy to continually improve its products, Vulcan-Hart Company reserves the right to change materials and specifications without notice.