



WOOD ASSIST STAND for VCCB Model Gas Charbroiler



Model SMOKER-VCCB72



CSA design certified.

Project _____
AIA # _____ SIS # _____
Item # _____ Quantity _____ C.S.I. Section 114000

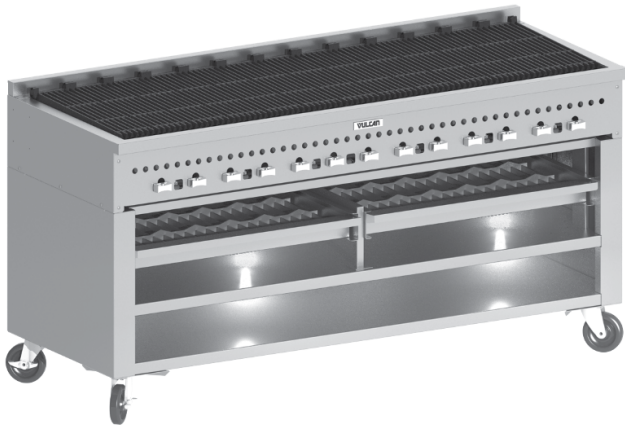
MODELS

- SMOKER-VCCB36 36" wide
- SMOKER-VCCB47 46.75" wide
- SMOKER-VCCB60 60" wide
- SMOKER-VCCB72 72" wide

STANDARD FEATURES

- Heavy duty, stainless steel welded construction
- Stainless steel under shelving
- Removable stainless steel water trays
- Extra heavy duty, removable steel wood racks
- Adjustable, locking casters
- Available for model VCCB36, VCCB47, VCCB60 and VCCB72 Charbroilers
- Ordered separately and field installed
- One year limited parts and labor warranty

Contact factory for availability of other sizes.



SMOKER-VCCB72 with VCCB72 Charbroiler

WOOD ASSIST STAND – for VCCB Model Gas Charbroiler

Approved by _____ Date _____ Approved by _____ Date _____



WOOD ASSIST STAND

for VCCB Model Gas Charbroiler

INSTALLATION REQUIREMENTS:

An adequate ventilation system is required for commercial cooking equipment. Information may be obtained by writing to the National Fire Protection Association, Batterymarch Park, Quincy, MA 02269. When writing refer to NFPA No. 96.

These units are manufactured for installation in accordance with National Fuel Gas Code, ANSI-Z223.1/NFPA #54 (latest edition). Copies may be obtained from The American Gas Association, Accredited Standards Committee Z223 @ 400 N. Capital St. NW, Washington, DC 20001, or the Secretary Standards Council, NFPA, 1 Batterymarch Park, Quincy, MA 02169-7471.

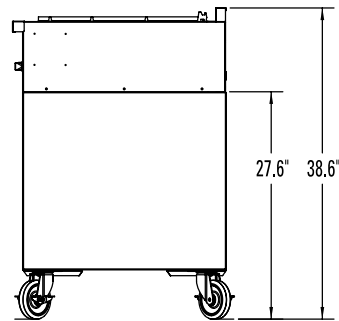
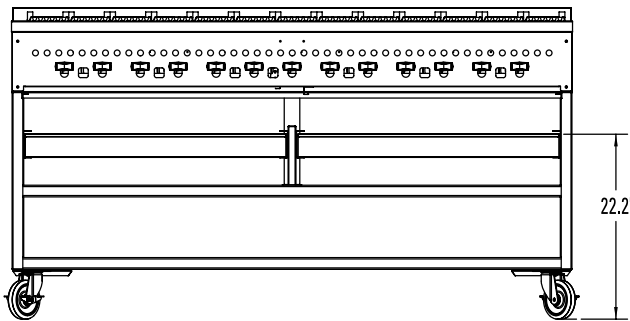
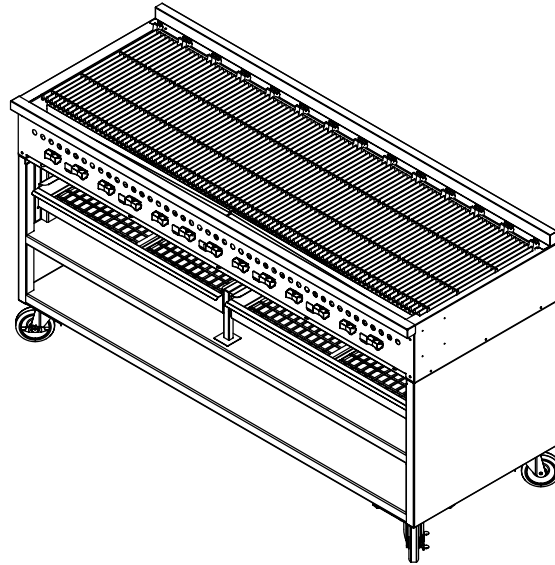
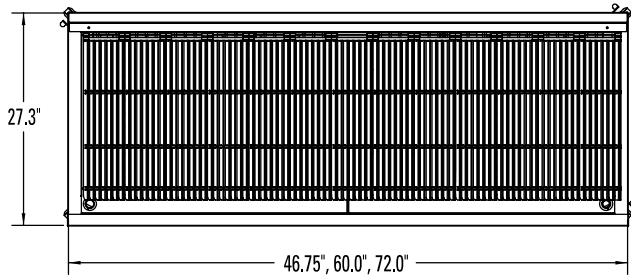
NOTE: In The Commonwealth of Massachusetts

All gas appliances vented through a ventilation hood or exhaust system equipped with a damper or with a power means of exhaust shall comply with 248 CMR.

CLEARANCES: This model's series is for installation in noncombustible locations with the following clearances:

	Back	Right Side	Left Side
Above grid level	3"	0"	0"
Below grid level	3"	0"	0"

This appliance is manufactured for commercial installation only and is not intended for home use.



MODEL	WIDTH	DEPTH	OVERALL HEIGHT*	NUMBER OF TRAYS	APPROX SHIP WT (LB/KG)
SMOKER-VCCB36	36"	27.3"	38.6"	1	235/107
SMOKER-VCCB47	46.75"	27.3"	38.6"	2	305/138
SMOKER-VCCB60	60"	27.3"	38.6"	2	375/170
SMOKER-VCCB72	72"	27.3"	38.6"	2	423/192

*This is a nominal dimension and can vary by +1.0" with adjustable casters.

As continued product improvement is a policy of Vulcan, specifications are subject to change without notice.