



CATALOG OF
REPLACEMENT PARTS



MODEL
E222 CHOPPER

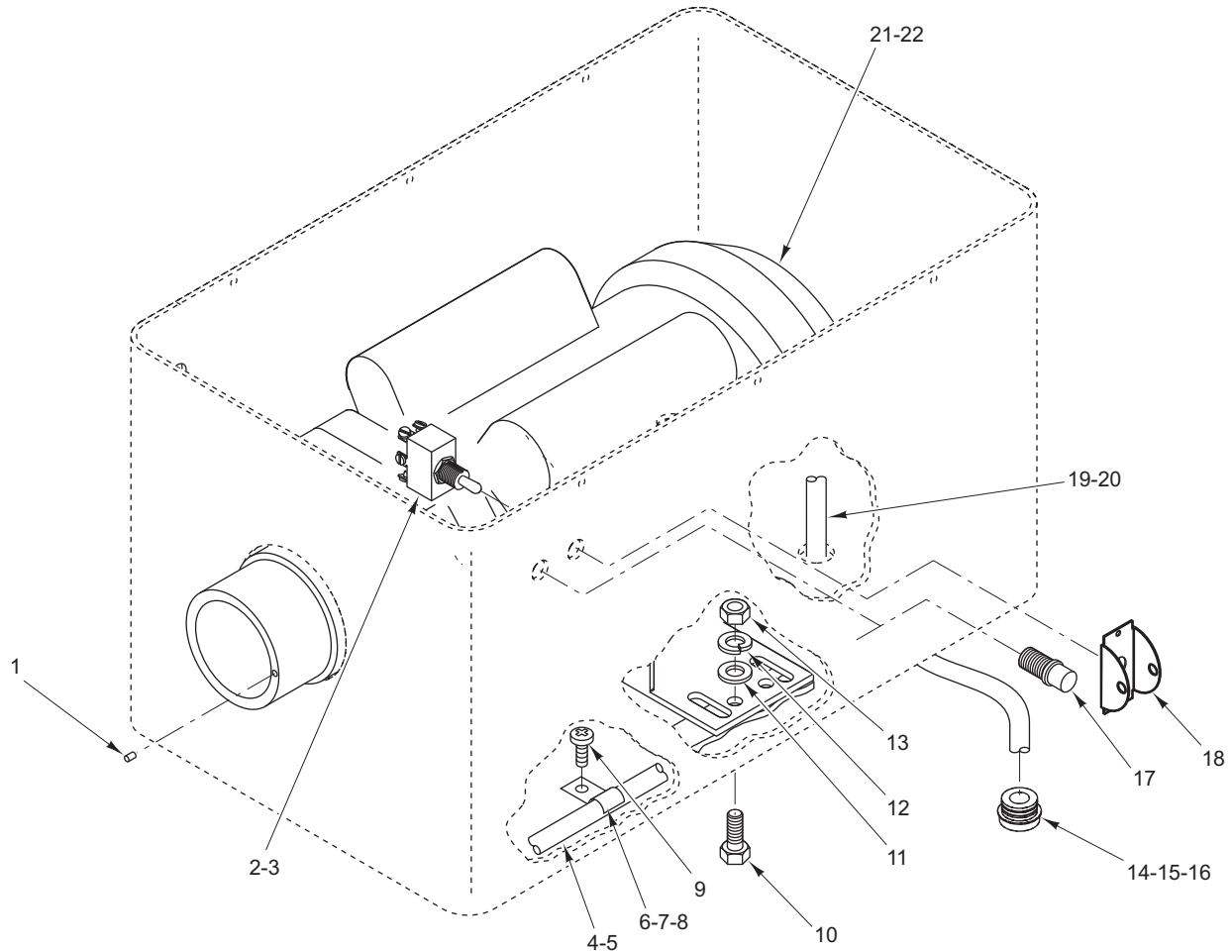
E222-1
E222-STD

EFFECTIVE APRIL 2010

Table of Contents

3	ELECTRICAL COMPONENTS
5	HOUSING UNIT
7	CHOPPER ASSEMBLY

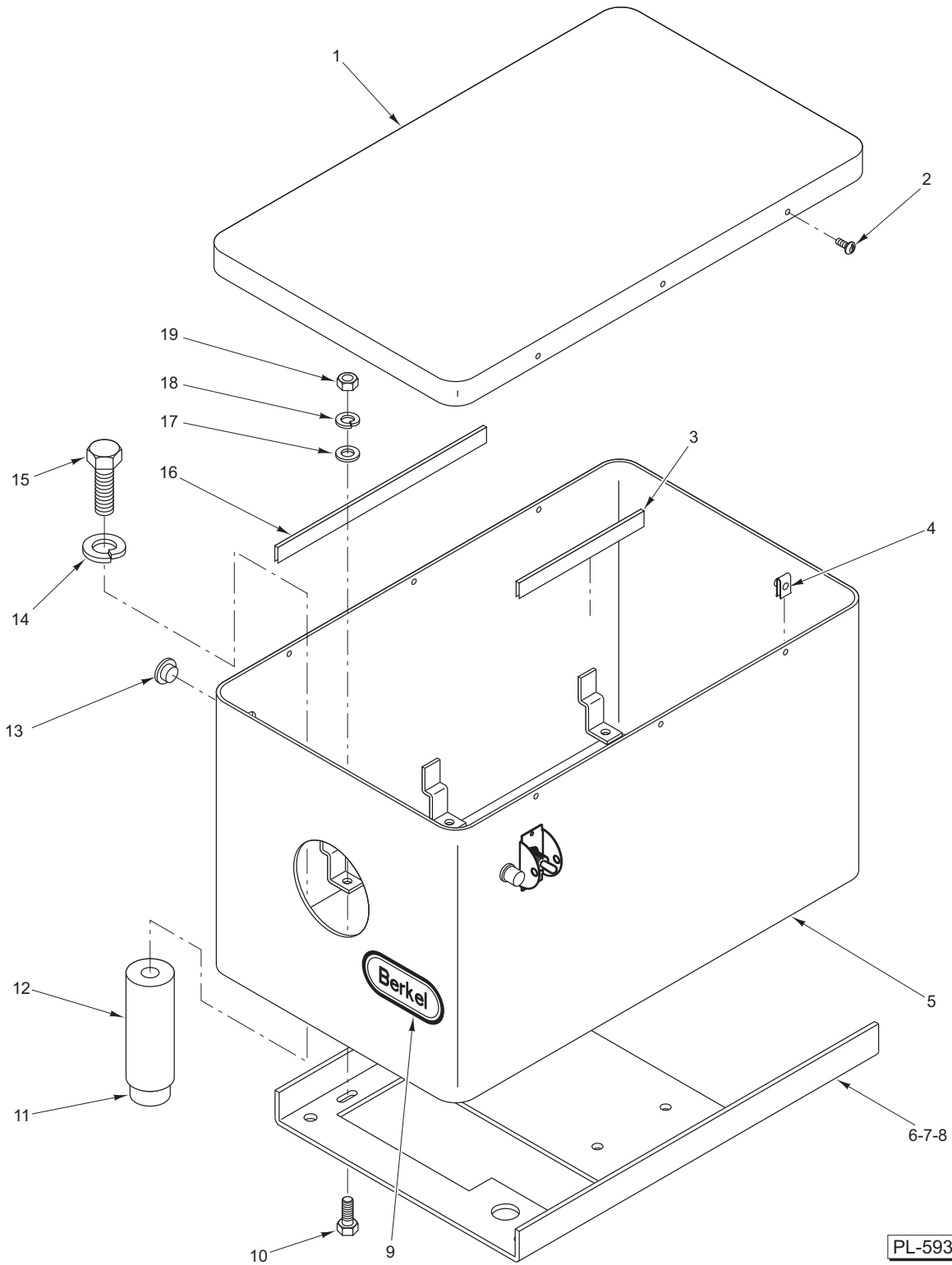
**Previous construction machines will be identified by serial numbers 9234-01121-xxxx.
Current construction machines will be identified by serial numbers 9234-11121-xxxx or 31-xxx-xxxx.**



PL-59361

ELECTRICAL COMPONENTS

ILLUS.	PART NO.	NAME OF PART	AMT.
PL-59361			
1	01-402275-00171	Pin.....	1
2	01-402675-00069	Switch – Toggle (Previous Construction).....	1
3	01-407109-0002B	Switch – Heavy Duty (Current Construction).....	1
4	01-404175-00736	Cord – Switch To Motor (Current Construction).....	1
5	01-404175-00421	Cord – Switch (Previous Construction).....	1
6	01-402675-00650	Clip (3/8 In.) (Previous Construction).....	1
7	00-255503	Mount – Cable Tie (Current Construction) (Not Shown).....	1
8	00-113703	Tie – Cable (Current Construction) (Not Shown).....	1
9	01-402175-03431	Mach. Screw 8-32 x 3/8 Truss Hd.	AR
10	01-402175-03063	Cap Screw 5/16-18 x 7/8 Hex Hd.	4
11	01-402275-01060	Washer.....	4
12	01-402275-03065	Lockwasher.....	4
13	01-402175-05060	Nut 5/16-18 Hex.....	4
14	01-402675-00562	Bushing – 90 Deg. Strain Relief (Previous Construction).....	1
15	FE-026-06	Relief – Electrical Strain (Current Construction).....	1
16	FE-026-08	Lock Nut 3/4 Electrical (Current Construction).....	1
17	01-402675-00053	Light – Pilot.....	1
18	01-402675-00647	Guard – Toggle Switch.....	1
19	01-404175-00043	Cord Assy. – Connecting (230 V., 60 Hz., 1 Ph.) (Previous Construction).....	1
20	01-404175-00031	Cord – Plug To Switch (110 V.) (Current Construction).....	1
21	01-404175-00737	Motor – Gear (115-230 V., 1.5 Hp.) (Current Construction).....	1
22	01-404175-00396	Motor – Gear (115-230 V., 60 Hz., 1 Ph., 1 Hp.) (Previous Construction).....	1

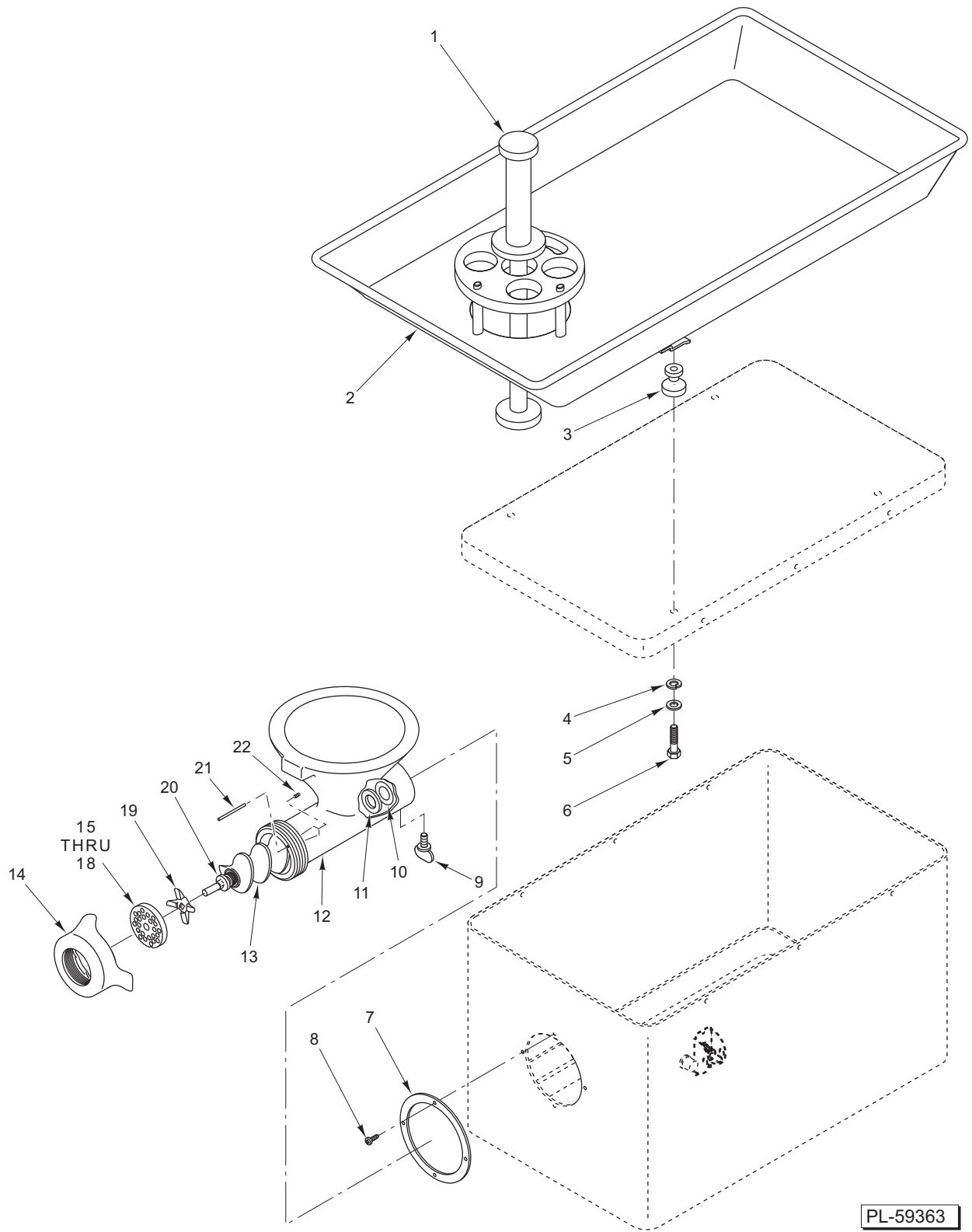


PL-59362

HOUSING UNIT

HOUSING UNIT

ILLUS.	PART NO.	NAME OF PART	AMT.
PL-59362			
1	01-403475-00685	Cover – Housing	1
2	01-402175-00429	Mach. Screw Rd. Hd. (Tamper-Proof).....	AR
3	01-403675-00217	Liner – Edge (4 In.).....	AR
4	01-402175-00380	Speed Nut 8-32.....	AR
5	01-404575-00894	Housing Assy.	1
6	01-403475-01042	Frame Assy. (Current Construction).....	1
7	01-404575-00730	Frame Assy. (Previous Construction) (Not Shown).....	1
8	01-403475-00716	Plate – Bottom Cover (Previous Construction) (Not Shown)	1
9	01-403175-00152	Logo – Berkel.....	1
10	01-402175-01053	Cap Screw 1/4-20 x 3/4 Hex Hd.....	AR
11	01-407320-0003D	Foot – Rubber.....	4
12	01-400230-25036	Leg.....	4
13	01-403675-00231	Plug – Hole	1
14	WL-004-06	Lockwasher 3/8 Helical.....	4
15	01-402175-01073	Cap Screw 3/8-16 x 1 Hex Hd.....	4
16	01-403675-00218	Liner – Edge (7 1/2 In.).....	AR
17	01-402275-03051	Washer.....	AR
18	01-402275-03055	Lockwasher.....	AR
19	01-402175-05050	Nut 1/4-20 Hex	AR
	01-404975-09219	Tool – One-Way Removal.....	1



PL-59363

CHOPPER ASSEMBLY

CHOPPER ASSEMBLY

ILLUS. PL-59363	PART NO.	NAME OF PART	AMT.
1	01-4K1578-00006	Rammer	1
2	01-404575-00761	Tray Assy.	1
3	01-400230-25320	Post.....	AR
4	01-402275-03055	Lockwasher.....	AR
5	01-402275-03051	Washer.....	AR
6	01-402175-03051	Cap Screw 1/4-20 x 1/2 Hex Hd.....	AR
7	01-400230-25844	Collar – Housing Trim	1
8	01-402175-00149	Self-Tapping Screw #8 Pan Hd.....	4
9	01-404575-00932	Thumbscrew	1
10	01-40000E-01993	Washer – Thrust	1
11	01-402275-00567	Washer – Nylon	1
12	01-404575-00883	Body Assy.	1
13	01-4000AK-03435	Feedscrew Assy.....	1
14	01-4K1286-00001	Ring – Tinned.....	1
15	01-4K4022-00001	Plate (1/8 In.).....	1
16	01-4K4022-0001B	Plate (3/16 In.).....	1
17	01-4K4022-0001D	Plate (1/4 In.).....	1
18	01-4K4022-0001H	Plate (3/8 In.).....	1
19	01-4K4022-00002	Knife.....	1
20	01-4K3436	Stud – Feedscrew.....	1
21	01-412081	Pin.....	1
22	01-410916	Set Screw	1

